

R:\A - Projects\Project Folders\proj 1401-1500\PF 1482\D. RWBC Drawings\FL-13137\FL-13137.dwg, FL-13137



123 NE Beacon Dr.
Grants Pass, OR 97526

GLAZED OR OPAQUE WOOD DOOR W / SIDELITES INSWING / OUTSWING

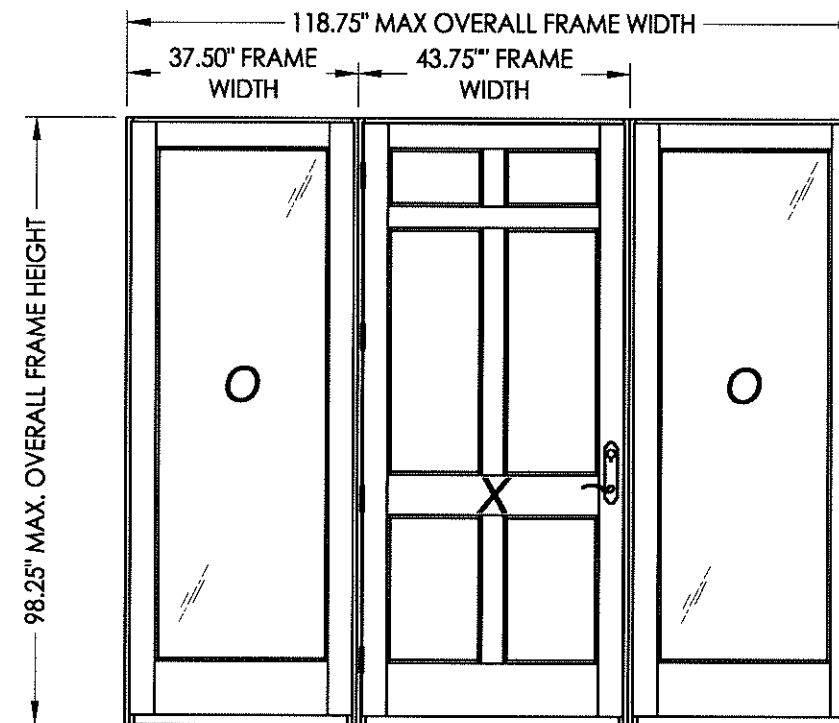
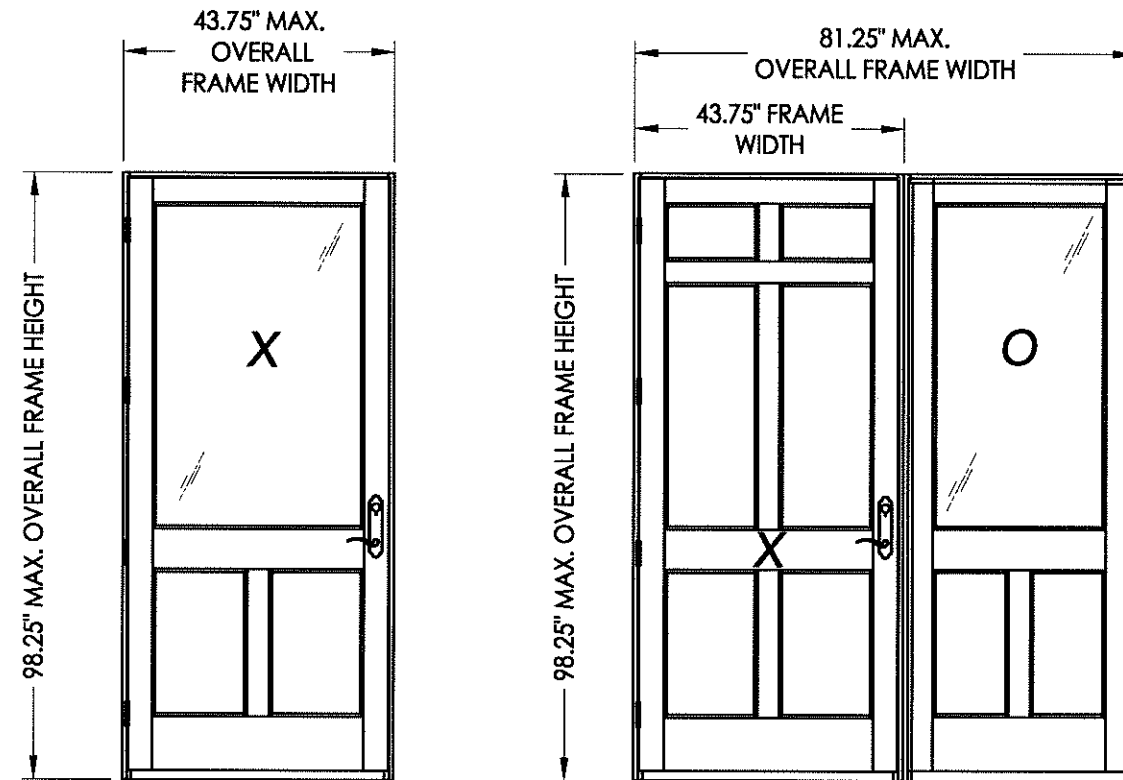
"NON-IMPACT"

GENERAL NOTES

1. This product has been evaluated and is in compliance with the 2010 Florida Building Code (FBC) structural requirements excluding the "High Velocity Hurricane Zone" (HVHZ).
2. Product anchors shall be as listed and spaced as shown on details. Anchor embedment to base material shall be beyond wall dressing or stucco.
3. When used in areas requiring wind borne debris protection this product is required to be protected with an impact resistant covering that complies with Section 1609.1.2 of the FBC.
4. For 2x stud framing construction, anchoring of these units shall be the same as that shown for 2x buck masonry construction.
5. Site conditions that deviate from the details of this drawing require further engineering analysis by a licensed engineer or registered architect.

TABLE OF CONTENTS

SHEET#	DESCRIPTION
1	Test elevations, design pressures and general notes
2	Door panel details (glazed)
3	Door panel details (opaque)
4	Sidelite panel details (3/4 lite)
5	Sidelite panel details (full lite)
6	Horizontal cross sections
7	Horizontal cross sections
8	Vertical cross sections
9	Buck and frame anchoring - (X)
10	Buck and frame anchoring - (XO)
11	Buck and frame anchoring - (OXO)
12	Lock details
13	Components
14	Bill of materials, components and glazing detail



DOOR PANEL TYPE	OVERALL FRAME DIMENSION	DOOR MAX. D.L.O. DIMENSION	SIDELITE MAX. D.L.O. DIMENSION	GLASS TYPE	DESIGN PRESSURE (PSF)	
					POSITIVE	NEGATIVE
OPAQUE	118.75" x 98.25"	N/A	27.00" x 82.25"	G1	+60.0	-65.0
HALF LITE	118.75" x 98.25"	33.00" x 51.87"	27.00" x 82.25"		+47.0	-50.0

Documents Prepared By:

RW BUILDING CONSULTANTS, INC.
P.O. Box 230 Valrico FL 33595
Phone No.: 813.659.9197
Florida Board of Professional Engineers
Certificate Of Authorization No. 9813
17-82 10.25.12
Lyndon F. Schmidt, P.E. No. 43409

PRODUCT: ROGUE VALLEY DOOR

PART OR ASSEMBLY:
TYPICAL ELEVATIONS, DESIGN PRESSURES & GENERAL NOTES

NO	DATE	BY	LFS
1	10/25/12		

REVISIONS

DATE: 10/06/09

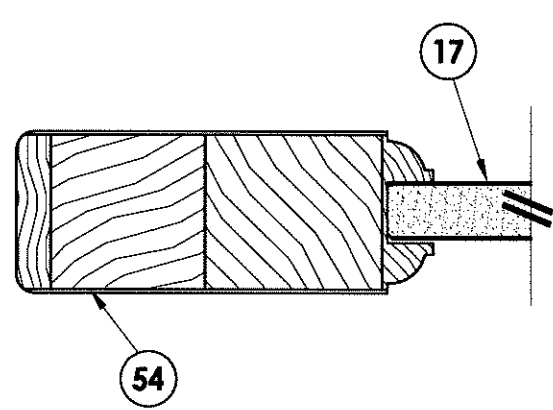
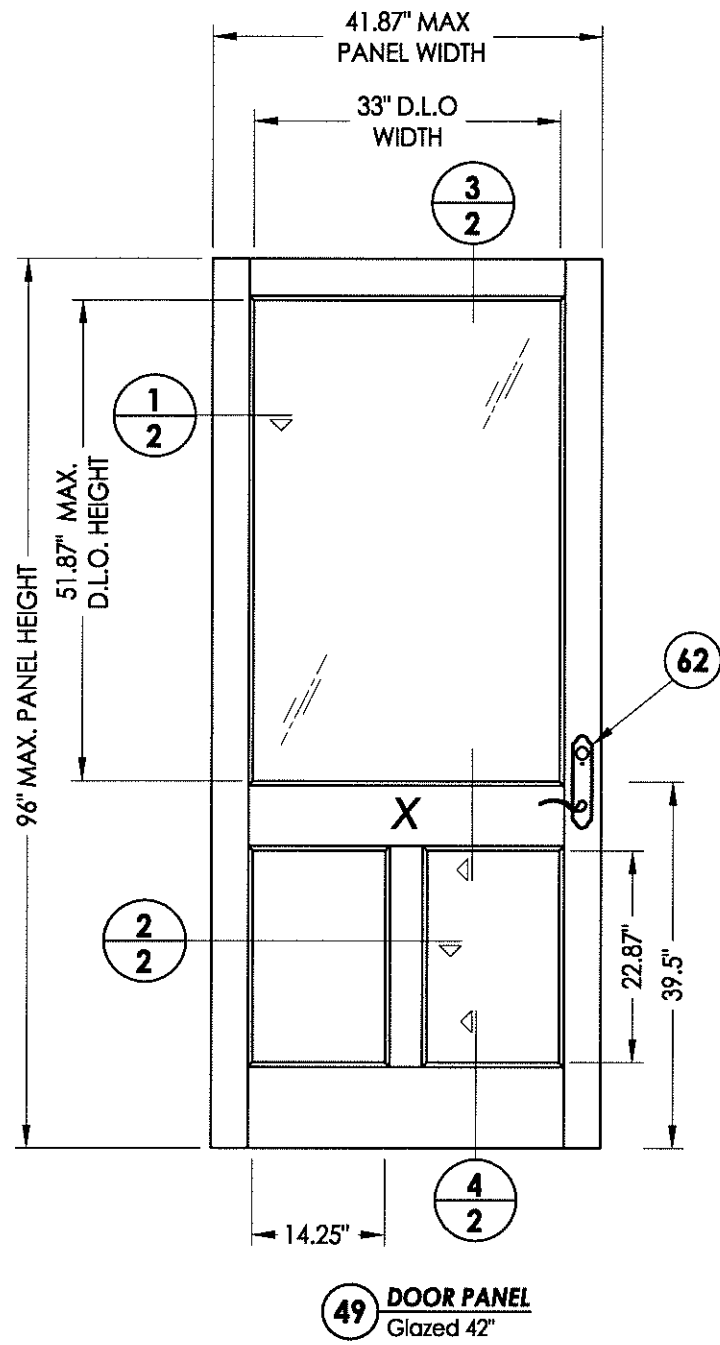
SCALE: N.T.S.

DWG. BY: JK

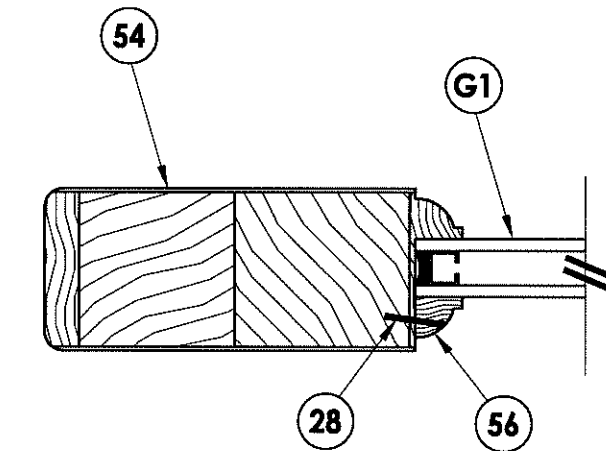
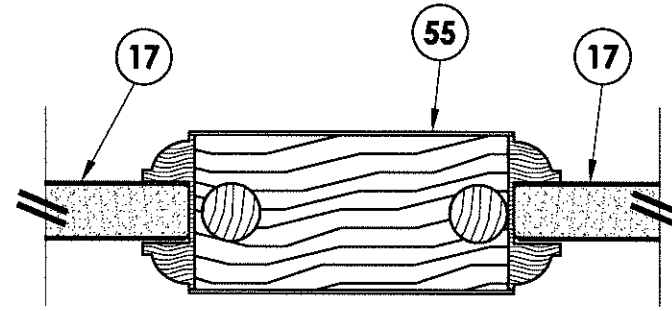
CHK. BY: LFS

DRAWING NO.: FL-13137.1

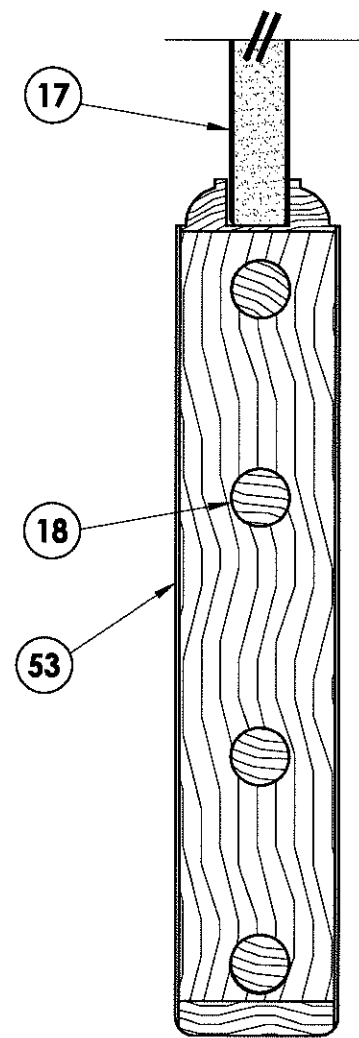
SHEET 1 OF 14



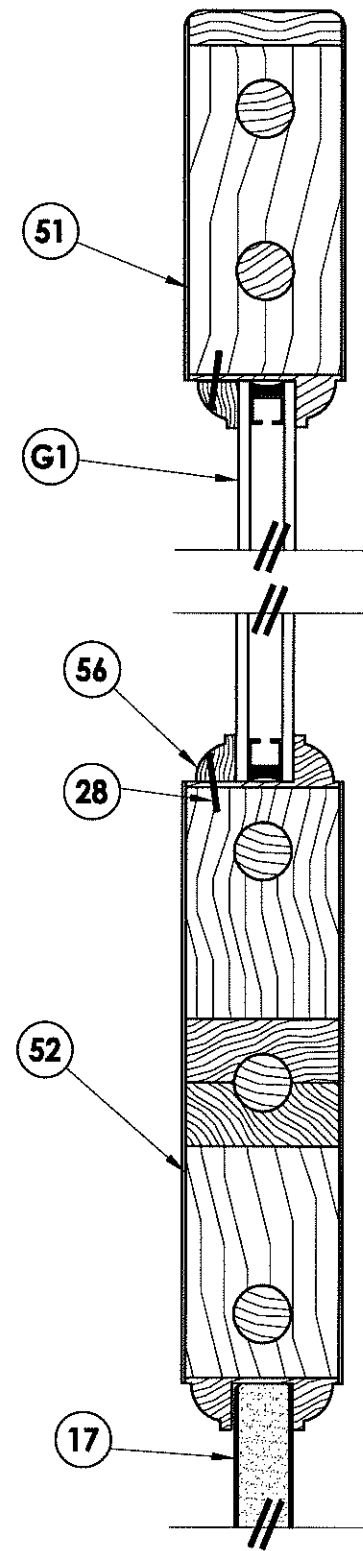
2 HORIZONTAL CROSS SECTION



1 HORIZONTAL CROSS SECTION



4 VERTICAL CROSS SECTION



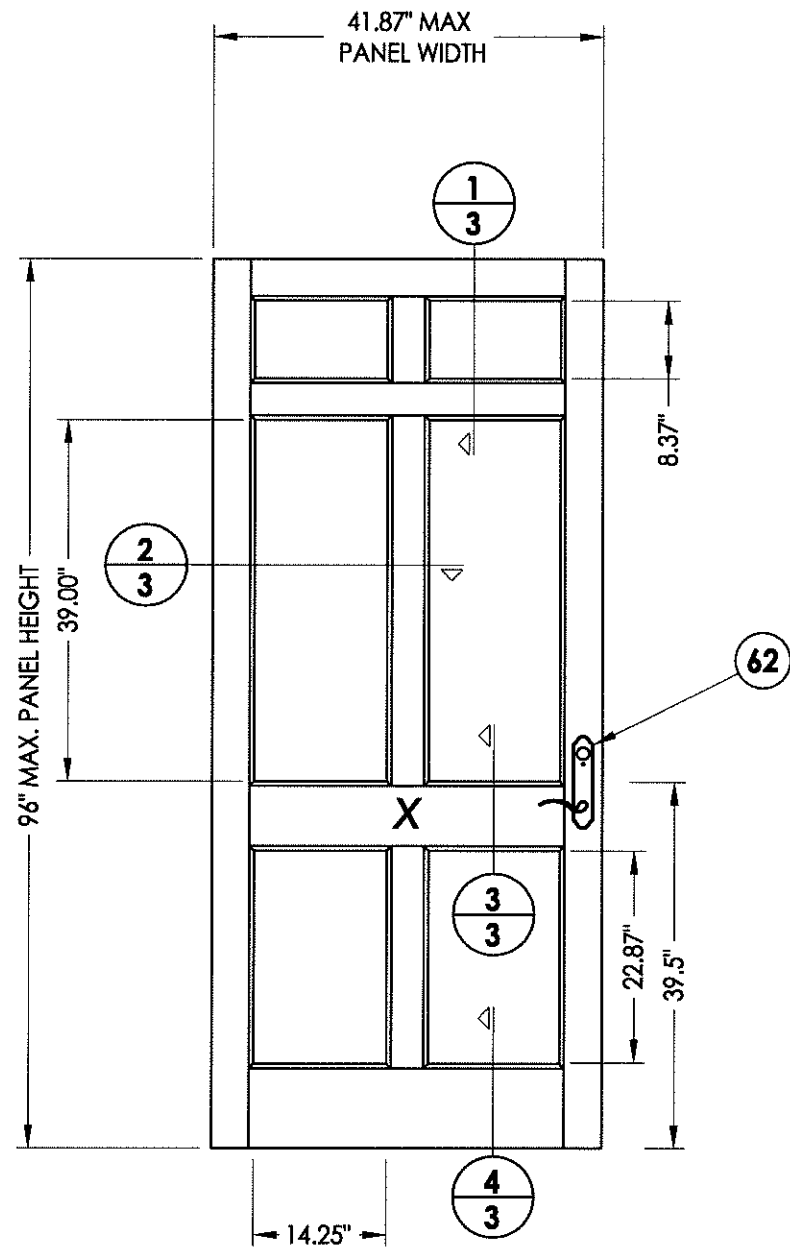
3 VERTICAL CROSS SECTION

DATE:	10/06/09
SCALE:	N.T.S.
DWG. BY:	JK
CHK. BY:	LFS
DRAWING NO.:	FL-13137.1
SHEET	2 OF 14

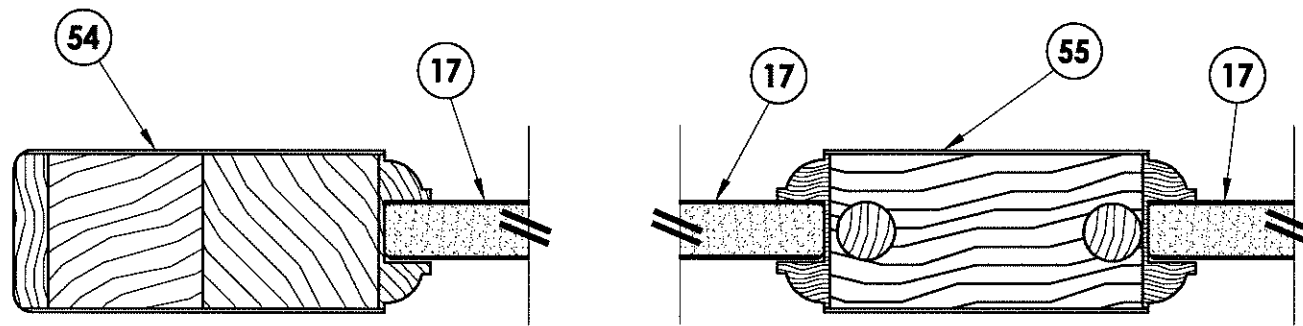
PRODUCT:	ROGUE VALLEY DOOR
PART OR ASSEMBLY:	DOOR PANEL DETAILS (GLAZED)
NO.	1
DATE	10/25/12
BY	LFS

Documents Prepared By:
RW BUILDING CONSULTANTS, INC.
 P.O. Box 230 Vairico FL 33595
 Phone No.: 813.659.9197
 Florida Board of Professional Engineers
 Certificate Of Authorization No. 9813
 17-5016-25-12
 Lyndon F. Schmidt, P.E. No. 43409

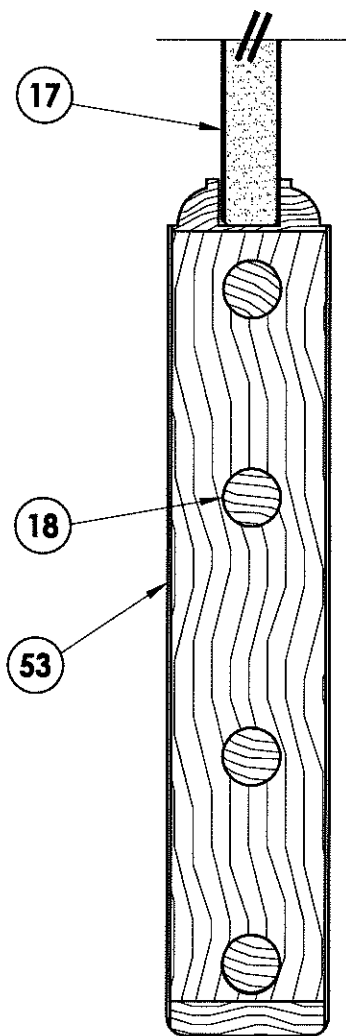
R:\A - Projects\Project Folders\proj 1401-1500\PF 1482\D. RWBC Drawings\FL-13137\FL-13137.dwg, 3.1



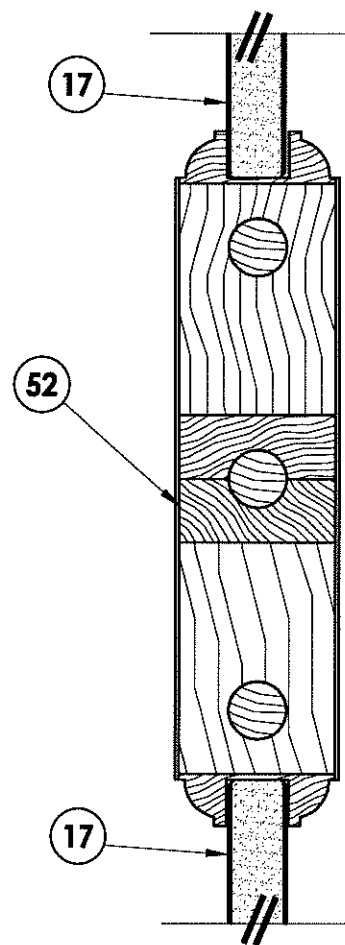
50 DOOR PANEL
Opaque 42"



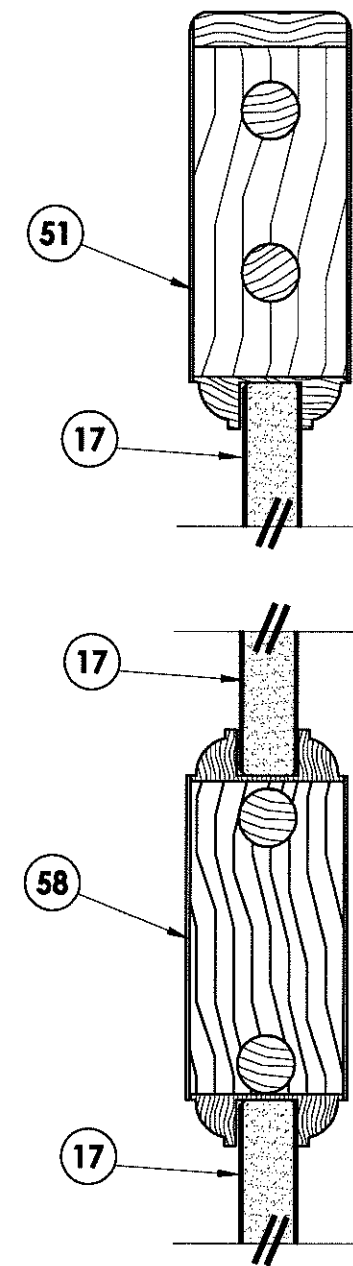
2
3 HORIZONTAL CROSS SECTION



4
3 VERTICAL CROSS SECTION



3
3 VERTICAL CROSS SECTION



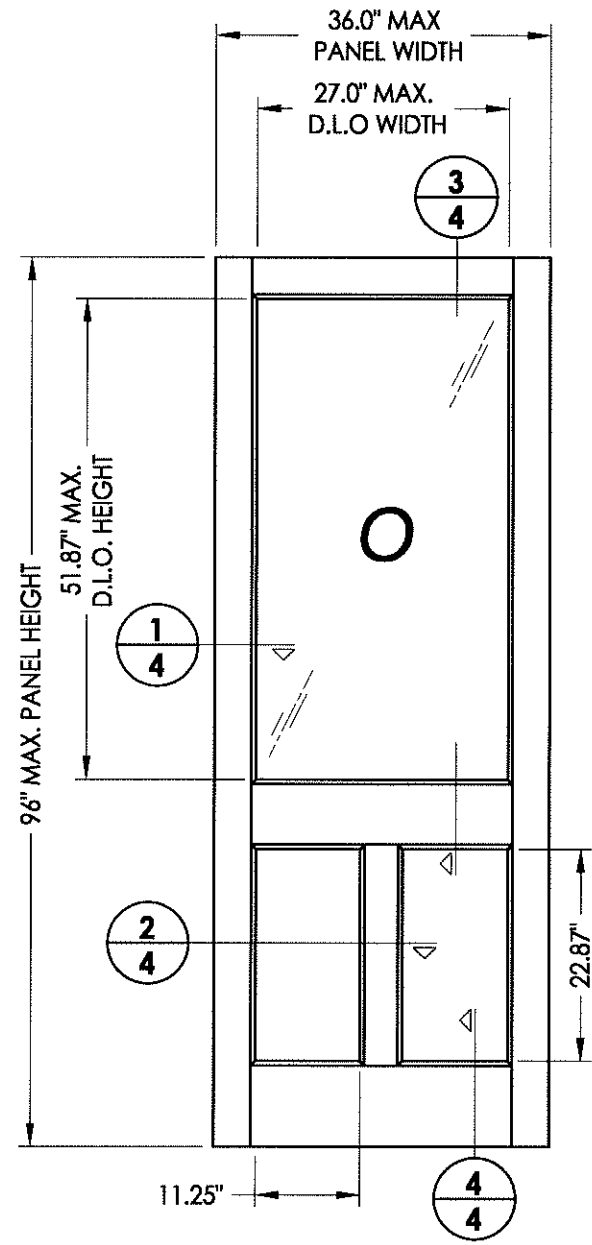
1
3 VERTICAL CROSS SECTION

DATE:	10/06/09
SCALE:	N.T.S.
DWG. BY:	JK
CHK. BY:	LFS
DRAWING NO.:	FL-13137.1
SHEET	3 OF 14

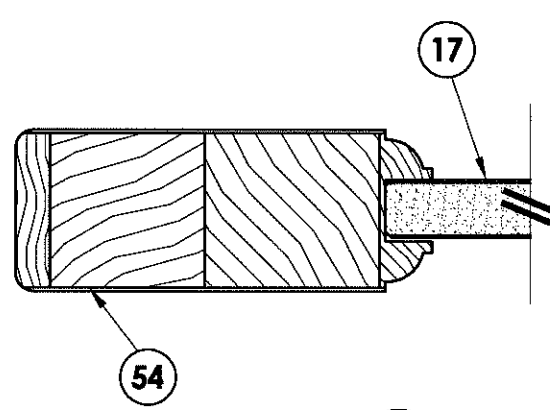
PRODUCT:	ROGUE VALLEY DOOR
PART OR ASSEMBLY:	DOOR PANEL DETAILS (OPAQUE)

NO.	DATE	REVISIONS
1	10/25/12	UPDATE TO 2010 FBC

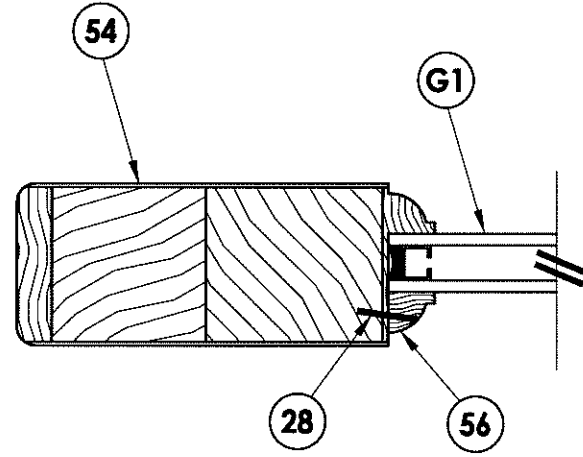
Documents Prepared By:
RW BUILDING CONSULTANTS, INC.
 P.O. Box 230 Valrico FL 33595
 Phone No.: 813.659.9197
 Florida Board of Professional Engineers
 Certificate Of Authorization No. 9813
LFS 10.25.12
 Lyndon F. Schmidt, P.E. No. 43409



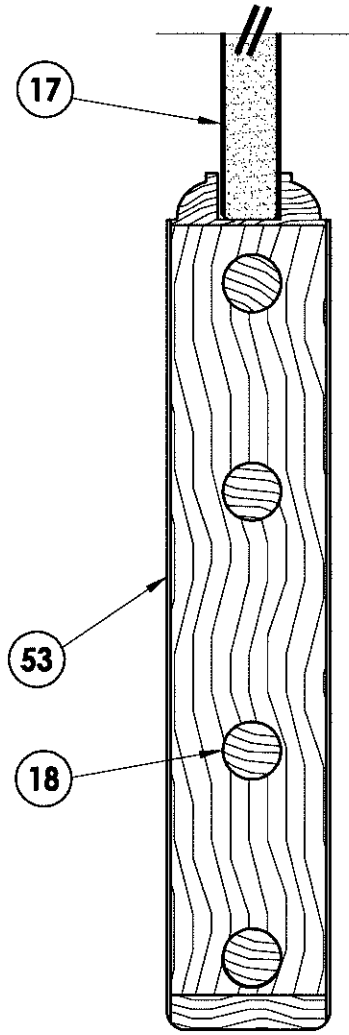
40 SIDELITE PANEL
Half lite



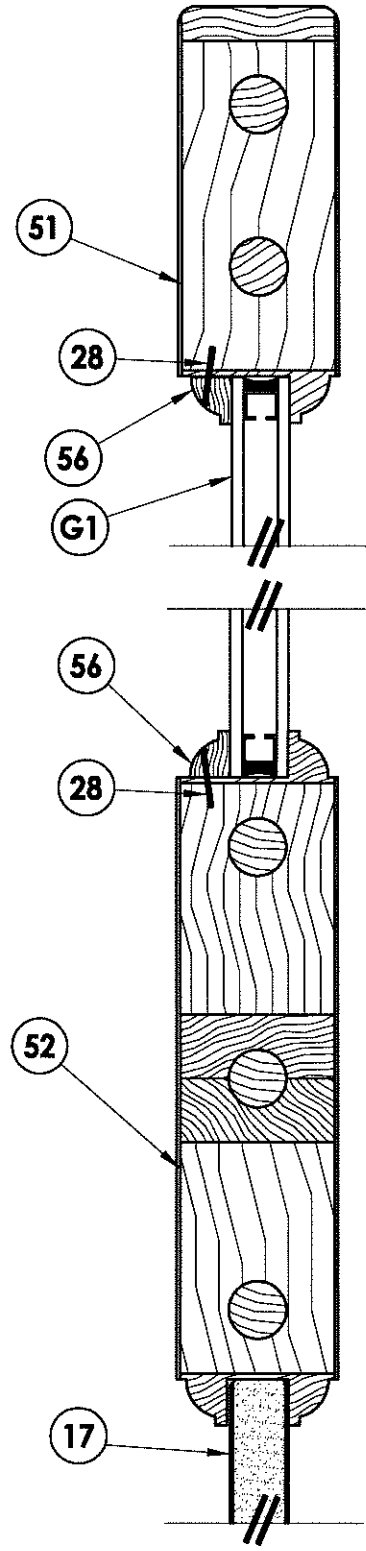
2 HORIZONTAL CROSS SECTION



1 HORIZONTAL CROSS SECTION



4 VERTICAL CROSS SECTION

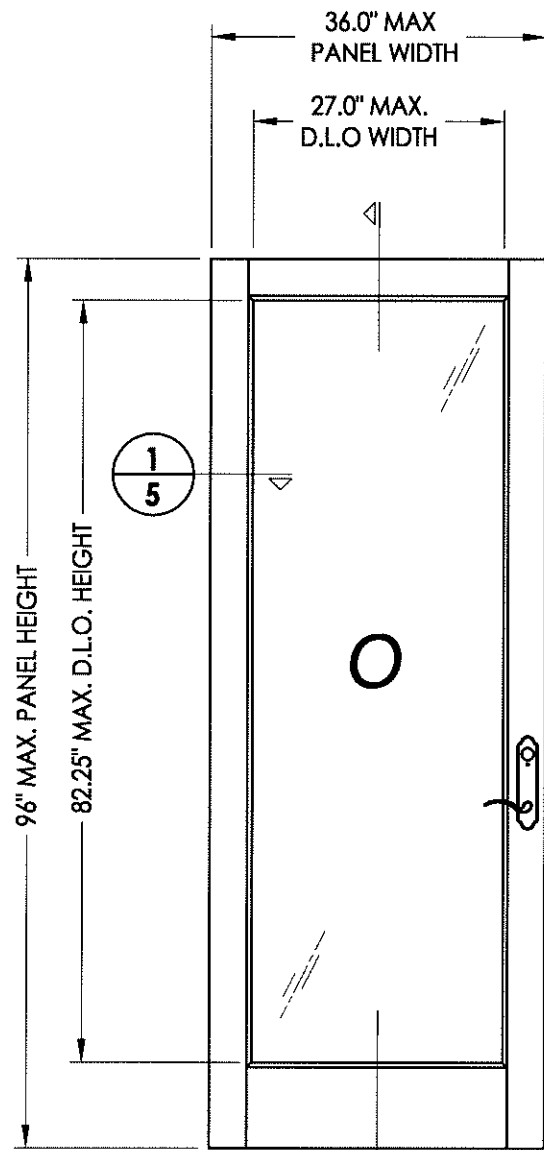


3 VERTICAL CROSS SECTION

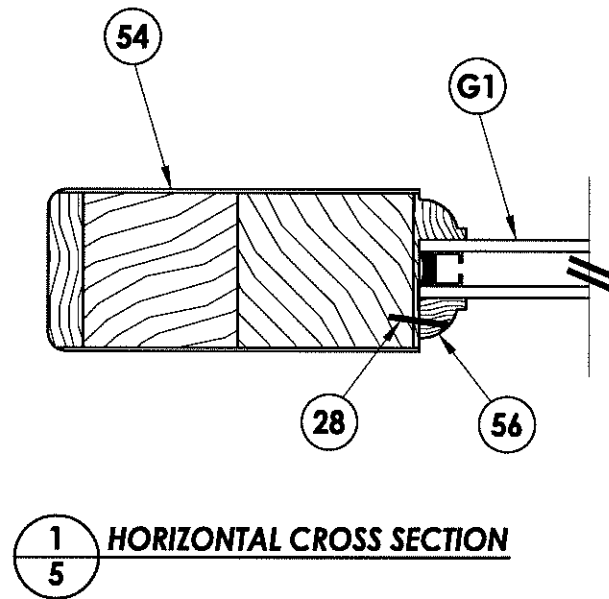
DATE:	10/06/09
SCALE:	N.T.S.
DWG. BY:	JK
CHK. BY:	LFS
DRAWING NO.:	FL-13137.1
SHEET	4 OF 14

PRODUCT:	ROGUE VALLEY DOOR
PART OR ASSEMBLY:	SIDELITE PANEL DETAILS (3/4 LITE)
NO.	1
DATE	10/25/12
UPDATE TO	2010 FBC
LFS	BY

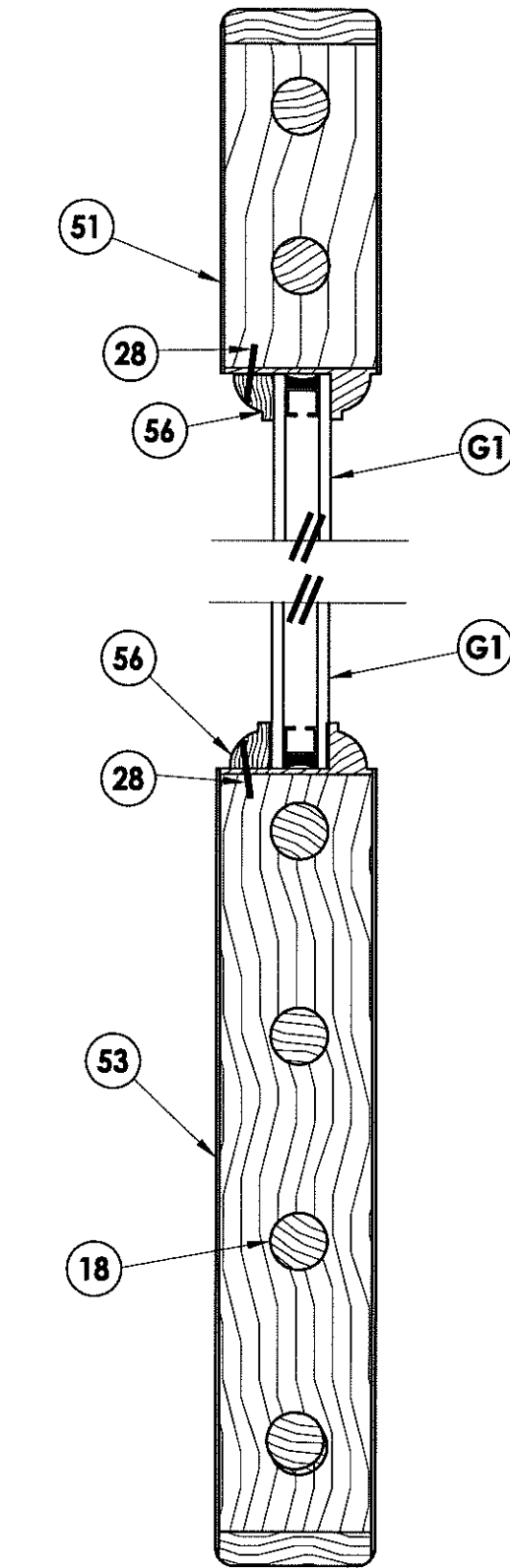
Documents Prepared By:
RW BUILDING CONSULTANTS, INC.
 P.O. Box 230 Valrico FL 33595
 Phone No.: 813.659.9197
 Florida Board of Professional Engineers
 Certificate Of Authorization No. 9813
LFS 10-25-12
 Lyndon F. Schmidt, P.E. No. 43409



41 SIDELITE PANEL
Full lite



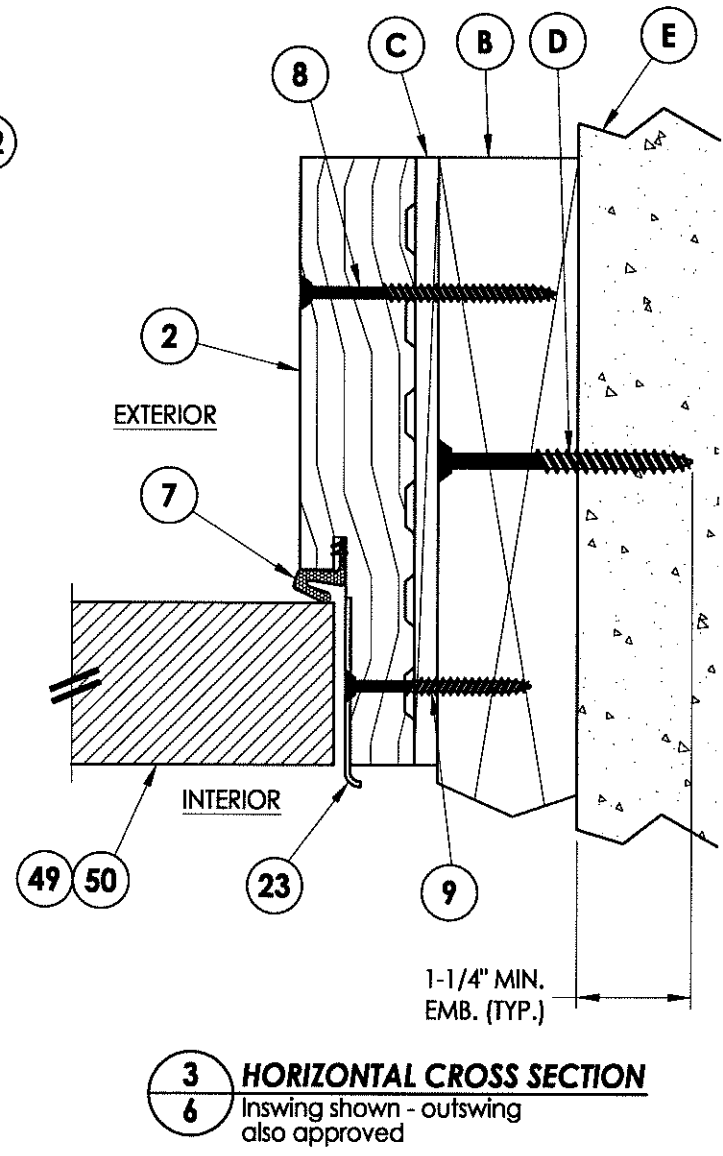
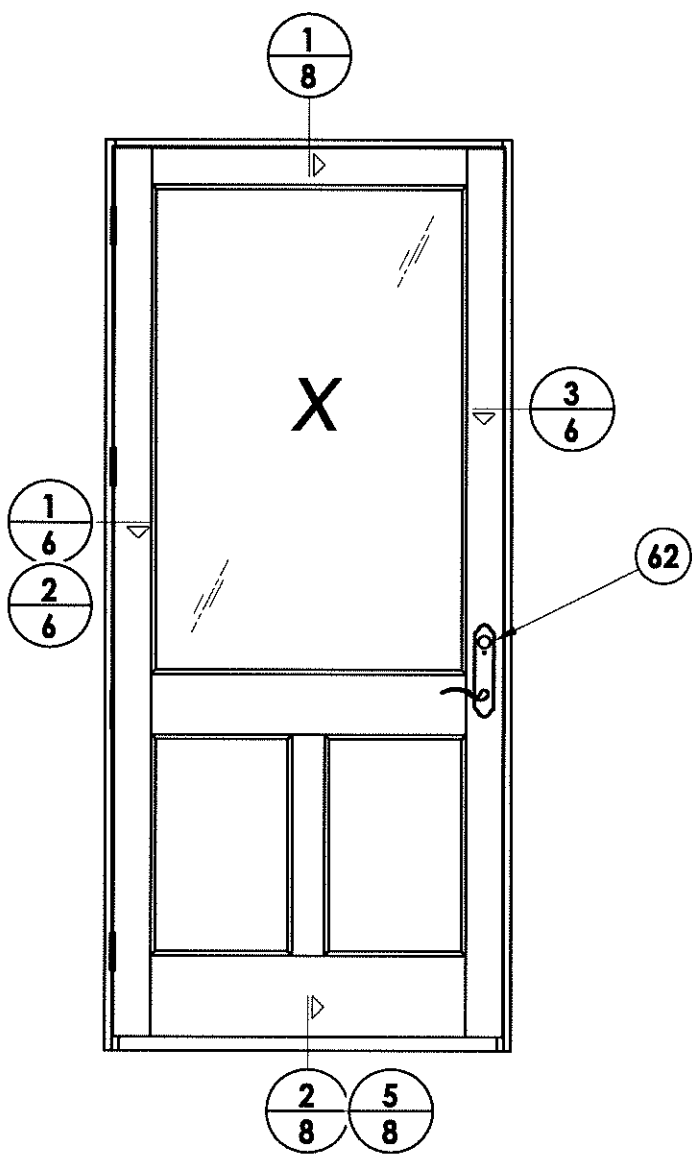
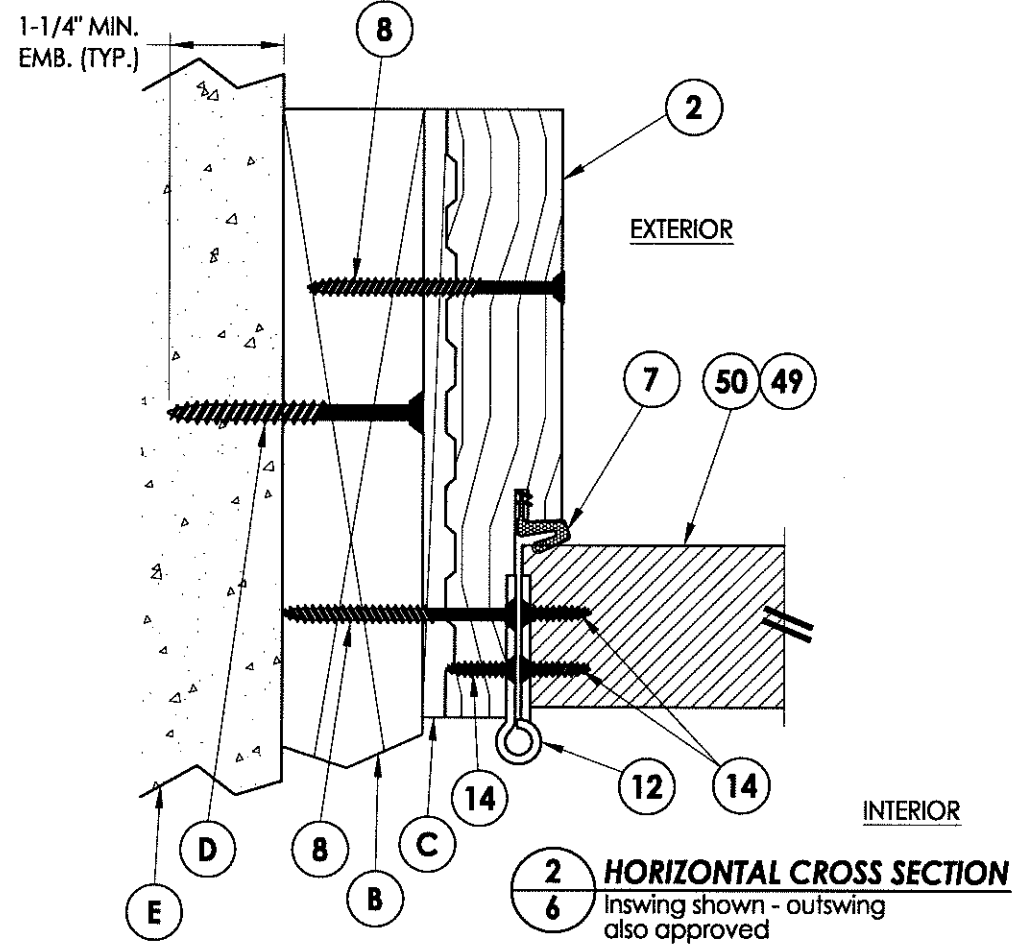
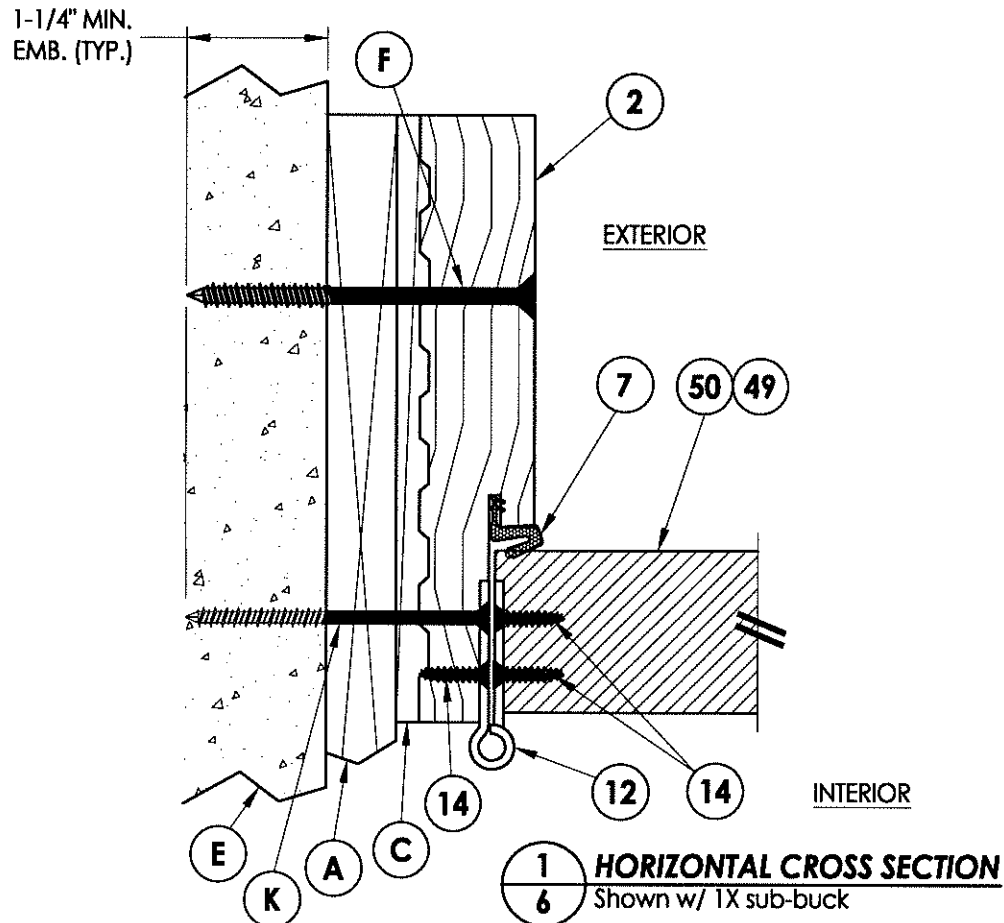
1 HORIZONTAL CROSS SECTION



2 VERTICAL CROSS SECTION

Documents Prepared By: RW BUILDING CONSULTANTS, INC. P.O. Box 230 Vairico FL 33595 Phone No.: 813.659.9197	
Florida Board of Professional Engineers Certificate Of Authorization No. 9813 17-22 10.25.12 Lyndon F. Schmidt, P.E. No. 43409	
PRODUCT: ROGUE VALLEY DOOR	PART OR ASSEMBLY: SIDELITE PANEL DETAILS (FULL LITE)
NO. 1 DATE 10/25/12	UPDATE TO 2010 FBC LFS BY
REVISIONS	
DATE: 10/06/09	
SCALE: N.T.S.	
DWG. BY: JK	
CHK. BY: LFS	
DRAWING NO.: FL-13137.1	
SHEET 5 OF 14	

R:\VA - Projects\Project Folders\proj 1401-1500\PF 1482\DWG RWBC Drawings\FL-13137\FL-13137.dwg, 6.1

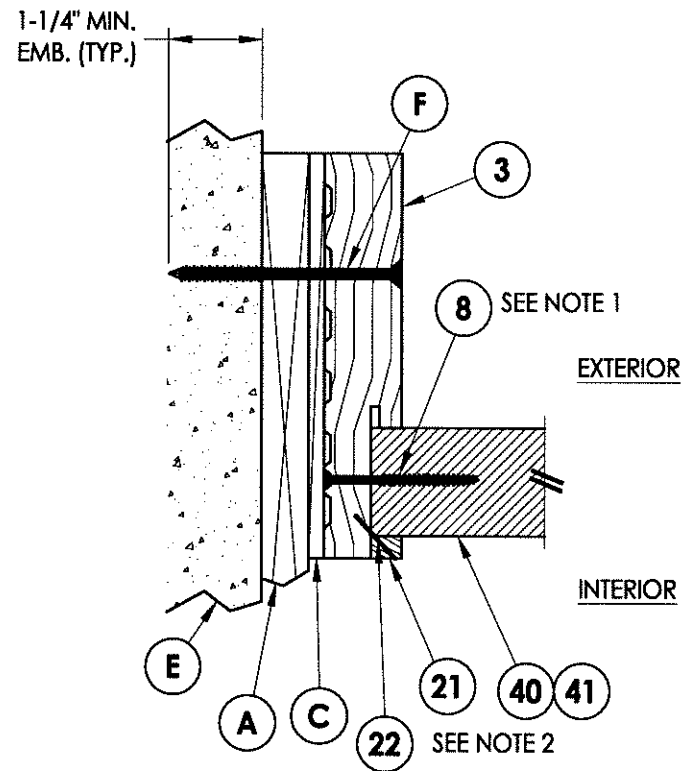
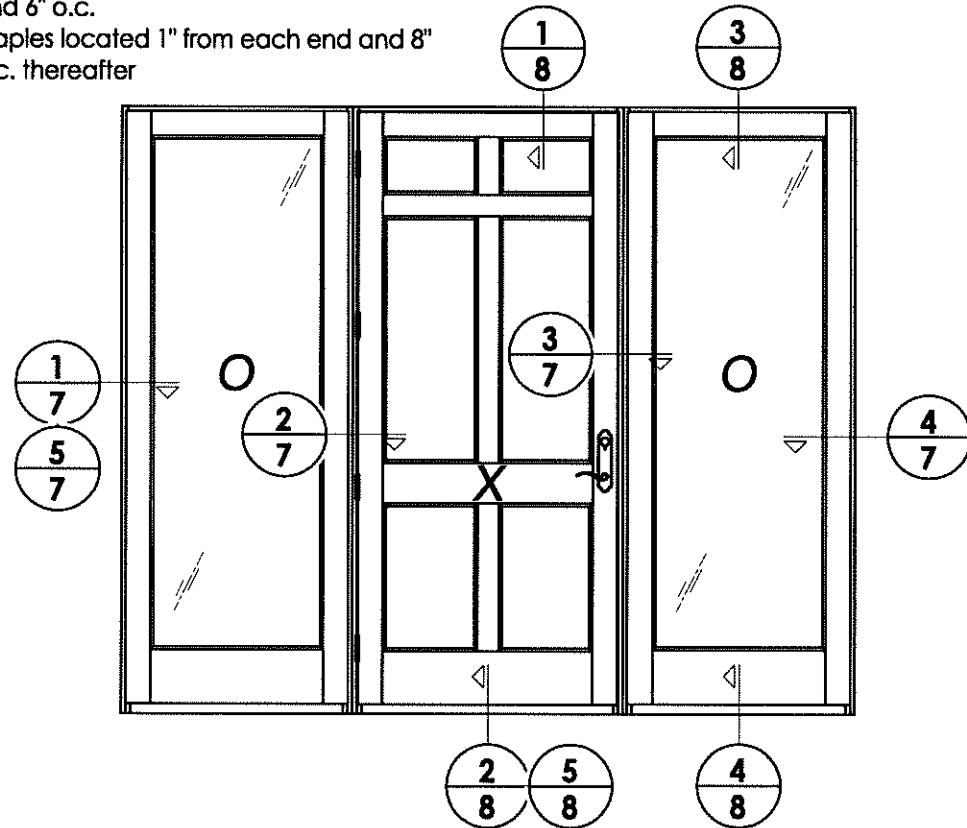


Documents Prepared By:		RW BUILDING CONSULTANTS, INC. P.O. Box 230 Valrico FL 33595 Phone No.: 813.659.9197 Florida Board of Professional Engineers Certificate of Authorization No. 9813 <i>1750 10.25.12</i> Lyndon F. Schmidt, P.E. No. 43409	
PRODUCT:	ROGUE VALLEY DOOR	PART OR ASSEMBLY:	HORIZONTAL CROSS SECTIONS
DATE:	10/06/09	NO.	DATE
SCALE:	N.T.S.	BY	LFS
DWG. BY:	JK	REVISIONS	
CHK. BY:	LFS		
DRAWING NO.:	FL-13137.1		
SHEET	6	OF	14

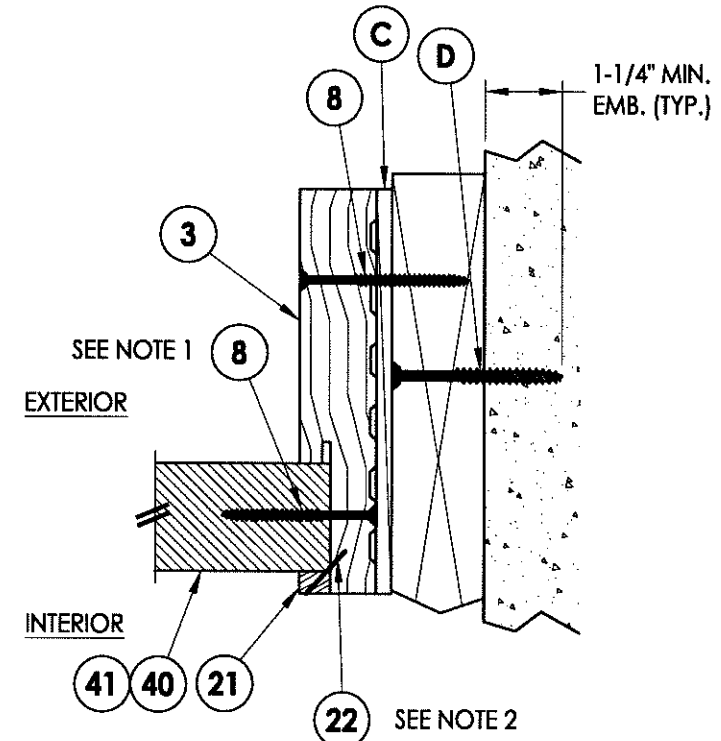
© 2009 R.W. BUILDING CONSULTANTS INC.

R:\VA - Projects\Folders\proj 1401-1500\VPF 1482\VD. RWBC Drawings\FL-13137\FL-13137.dwg, 7.1

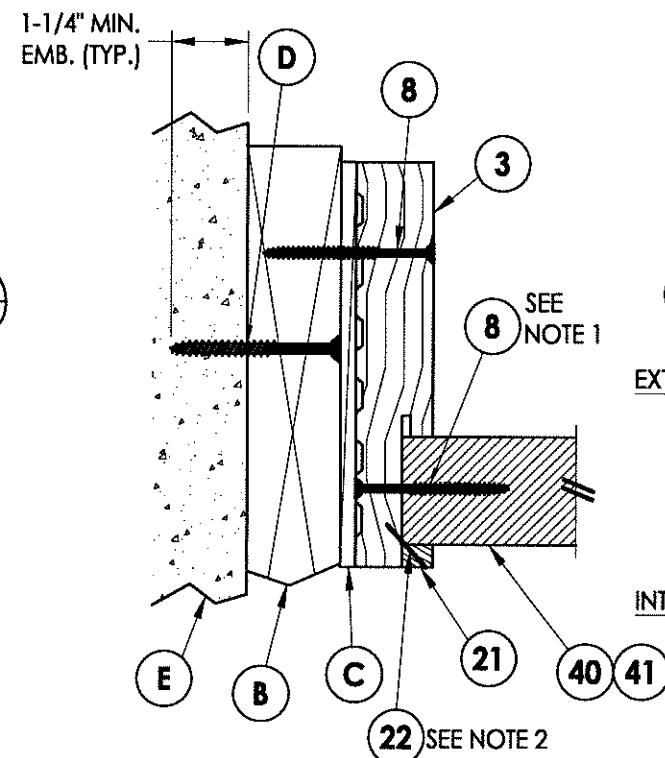
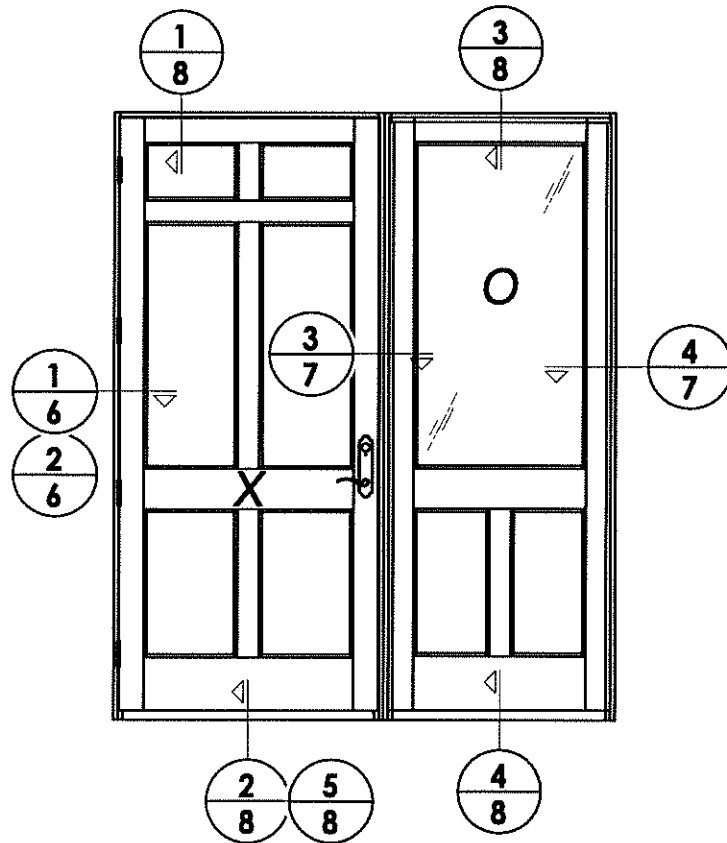
- NOTE:**
1. Attach sidelite panel to the frame with screws (#10 X 2-1/2" pth) 2" from each end and 6" o.c.
 2. Staples located 1" from each end and 8" o.c. thereafter



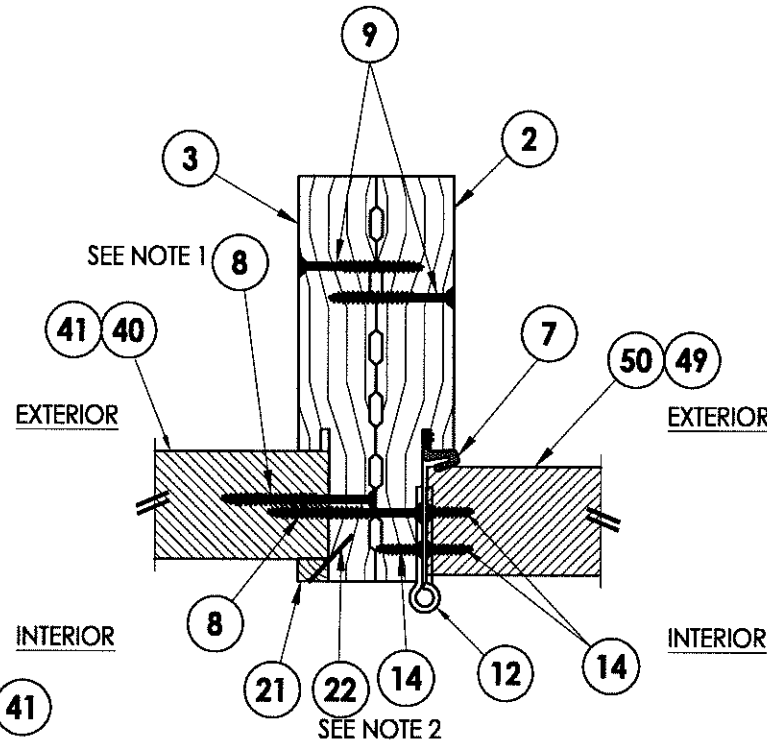
5 **HORIZONTAL CROSS SECTION**
7 Shown w/ 1X sub-buck



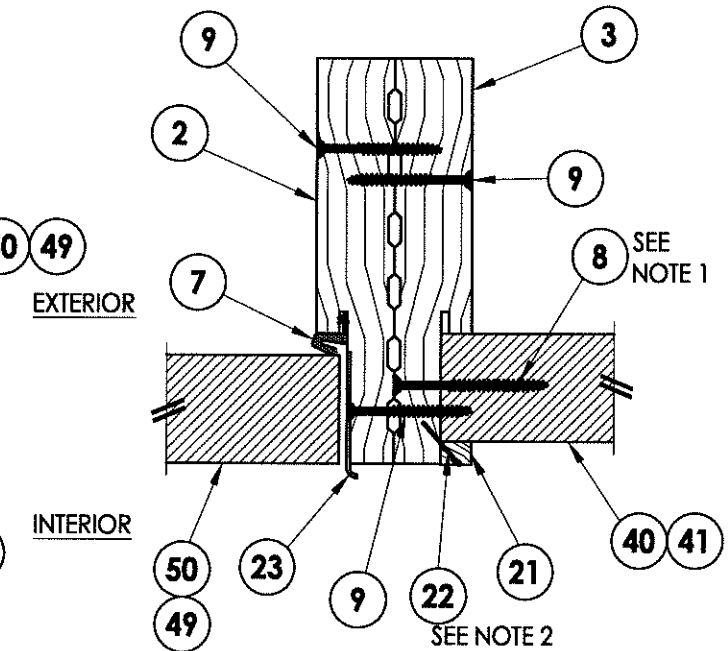
4 **HORIZONTAL CROSS SECTION**
7 Inswing shown - outswing also approved



1 **HORIZONTAL CROSS SECTION**
7 Inswing shown - outswing also approved



2 **HORIZONTAL CROSS SECTION**
7 Inswing shown - outswing also approved



3 **HORIZONTAL CROSS SECTION**
7 Inswing shown - outswing also approved

Documents Prepared By:

RW BUILDING CONSULTANTS, INC.
P.O. Box 230 Valrico FL 33595
Phone No.: 813.659.9197
Florida Board of Professional Engineers
Certificate Of Authorization No. 9813
17 SEP 10 25.12
Lyndon F. Schmidt, P.E. No. 43409

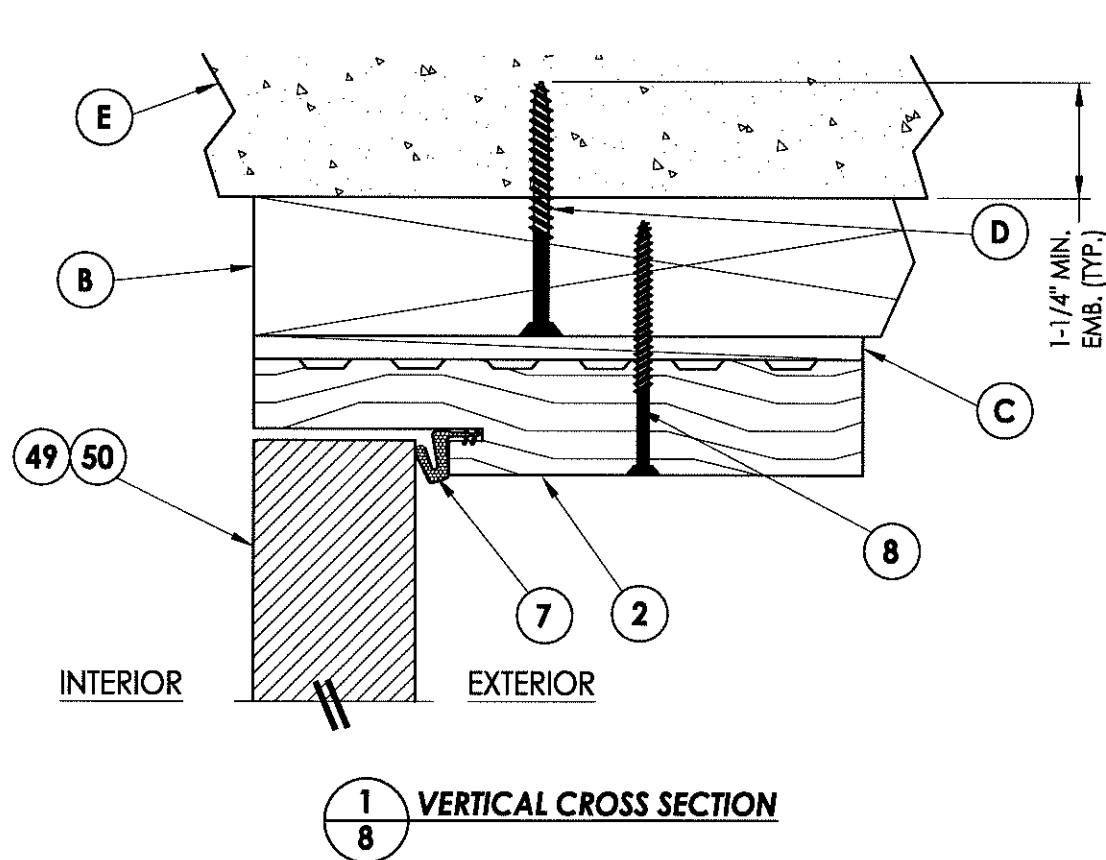
PRODUCT: ROGUE VALLEY DOOR

PART OR ASSEMBLY: HORIZONTAL CROSS SECTIONS

NO.	DATE	BY
1	10/25/12	LFS
UPDATE TO 2010 FBC		

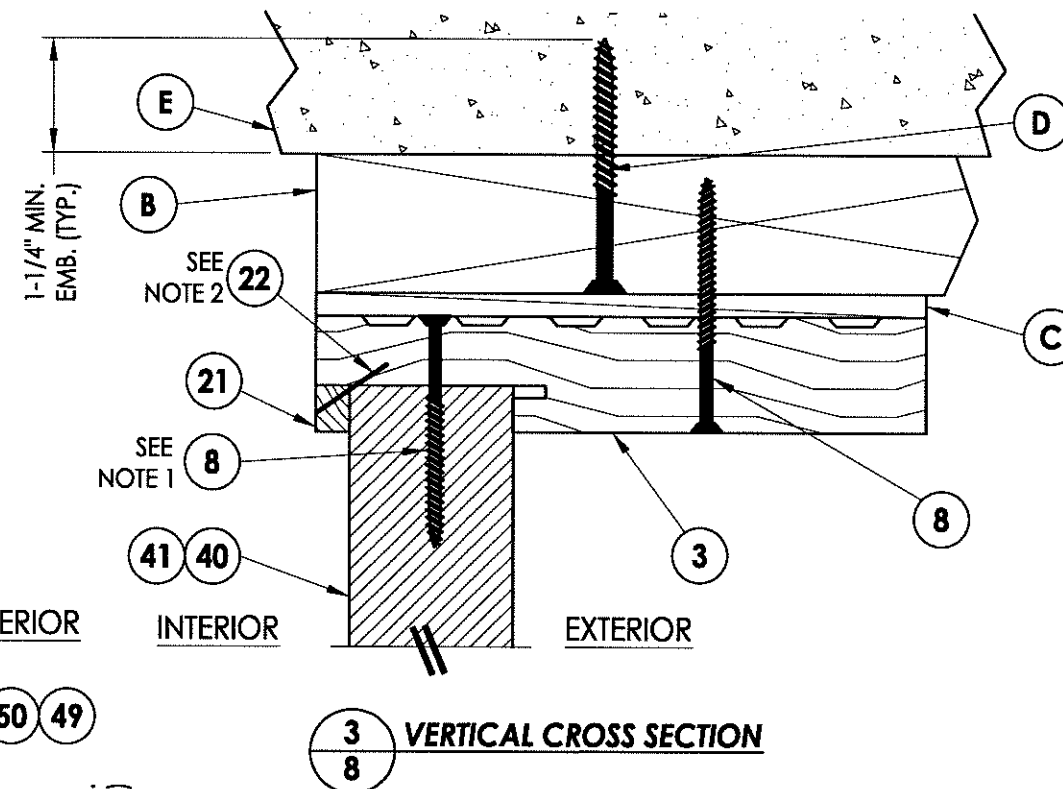
DATE: 10/06/09
SCALE: N.T.S.
DWG. BY: JK
CHK. BY: LFS
DRAWING NO.: FL-13137.1
SHEET 7 of 14

R:\VA - Projects\Project Folders\proj 1401-1500\PF 1482\1D. RWBC Drawings\FL-13137\FL-13137.dwg, 8.1

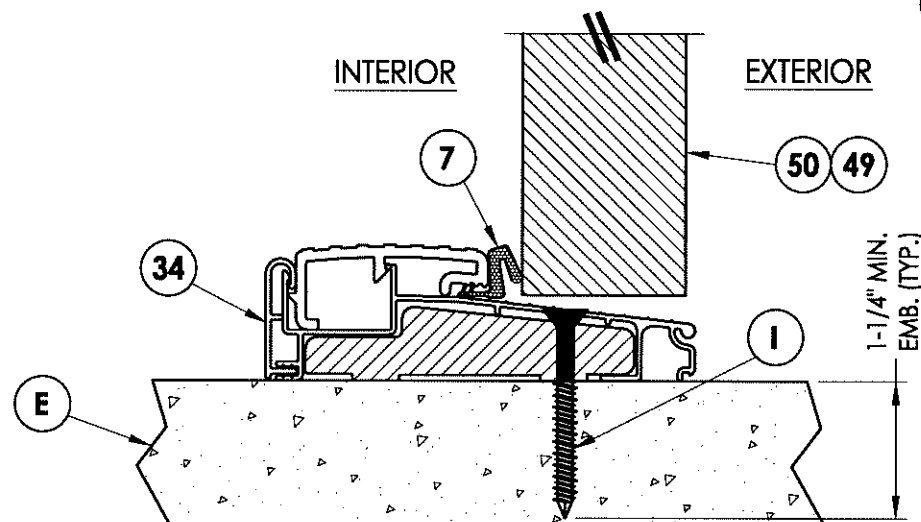


1
8 VERTICAL CROSS SECTION

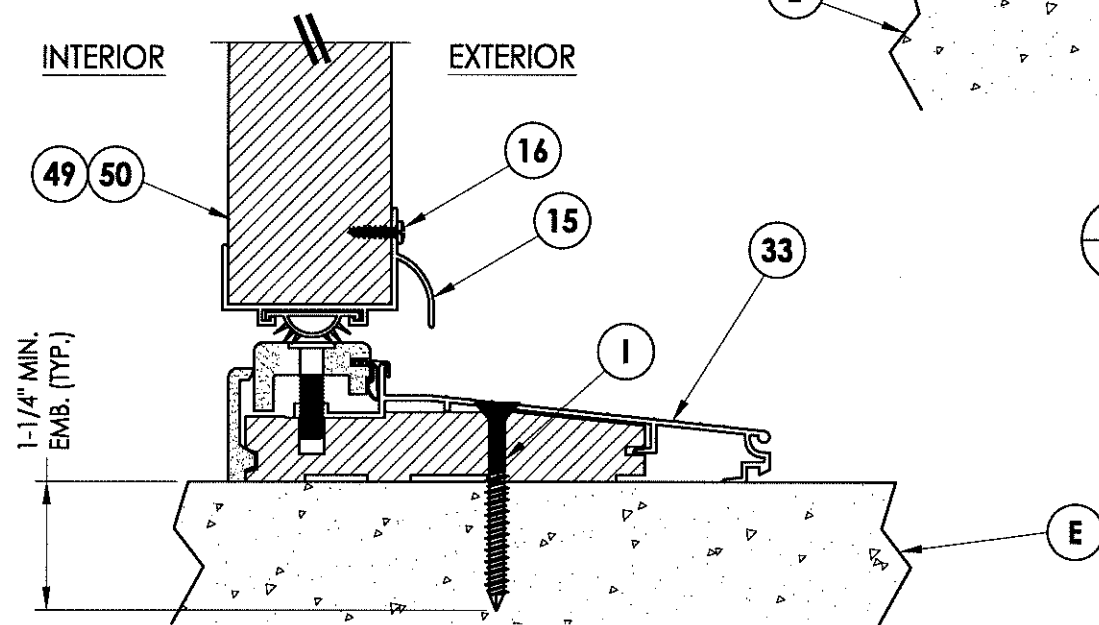
NOTE:
1. Attach sidelite panel to the frame with screws (#10 X 2-1/2' pfh) 2" from each end and 6" o.c.
2. Staples located 1" from each end and 8" o.c. thereafter



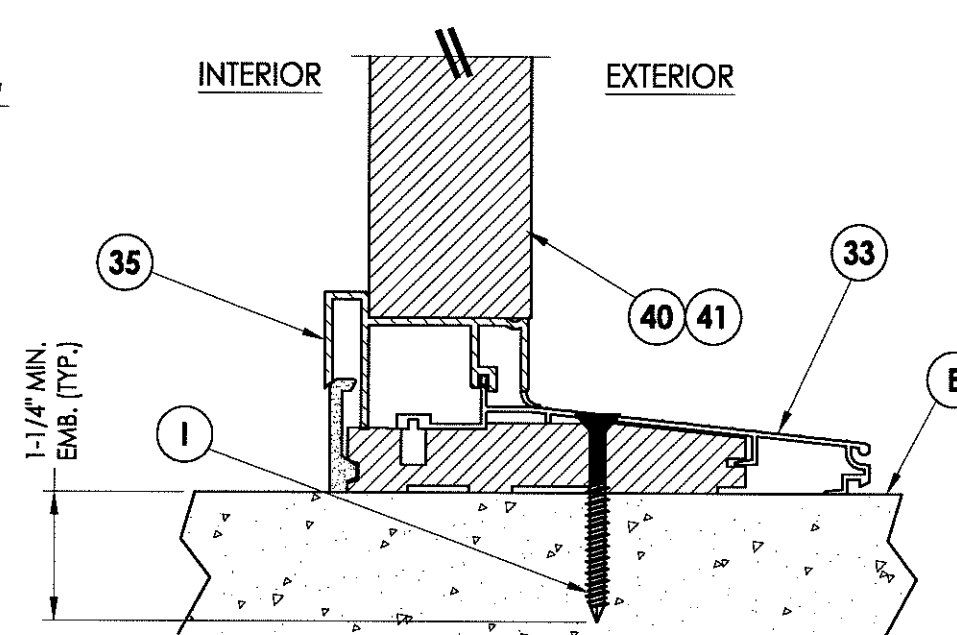
3
8 VERTICAL CROSS SECTION



5
8 VERTICAL CROSS SECTION



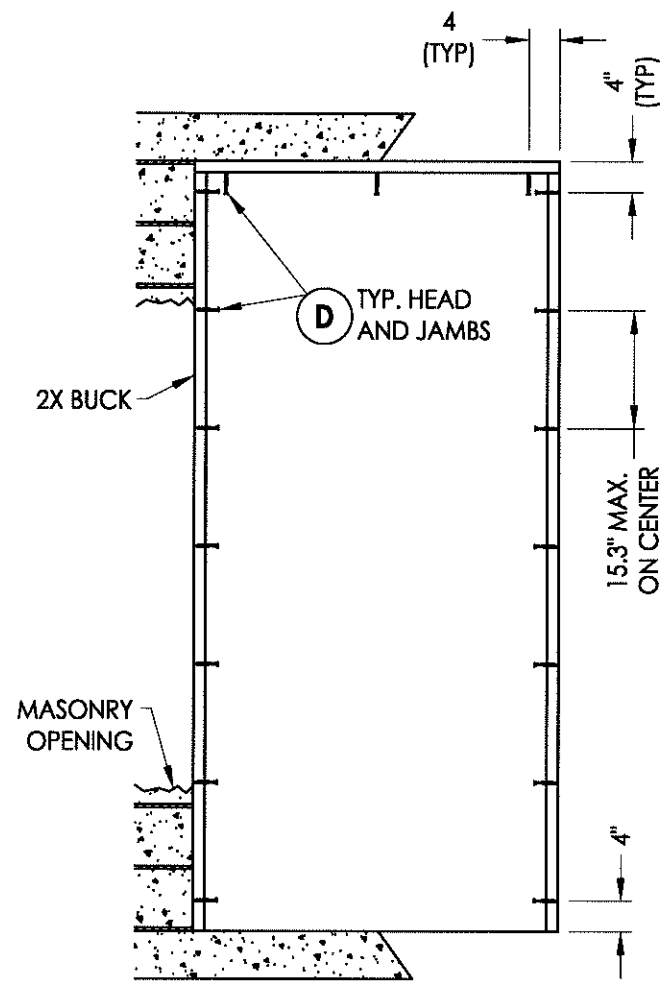
2
8 VERTICAL CROSS SECTION



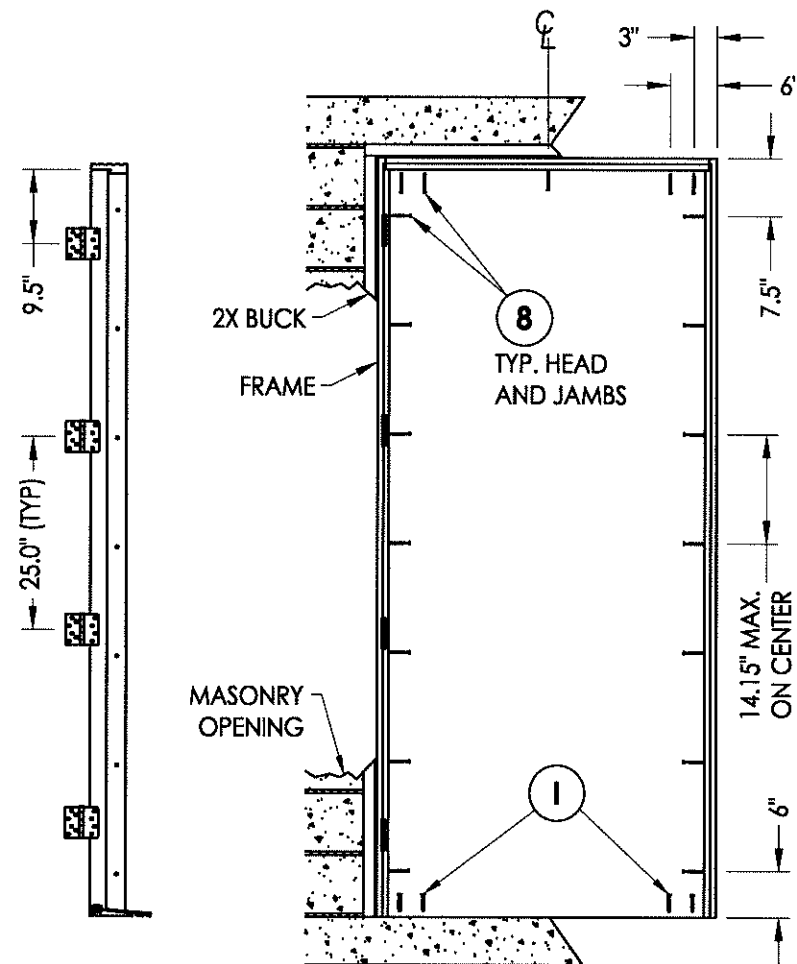
4
8 VERTICAL CROSS SECTION

Documents Prepared By:		RWBC BUILDING CONSULTANTS, INC. P.O. Box 230 Vairco FL 33595 Phone No.: 813.659.9197	
PRODUCT:		ROGUE VALLEY DOOR	
PART OR ASSEMBLY:		VERTICAL CROSS SECTIONS	
NO.	DATE	BY	REVISIONS
1	10/25/12	LFS	UPDATE TO 2010 FBC
DATE: 10/06/09			
SCALE: N.T.S.			
DWG. BY: JK			
CHK. BY: LFS			
DRAWING NO.: FL-13137.1			
SHEET 8 OF 14			

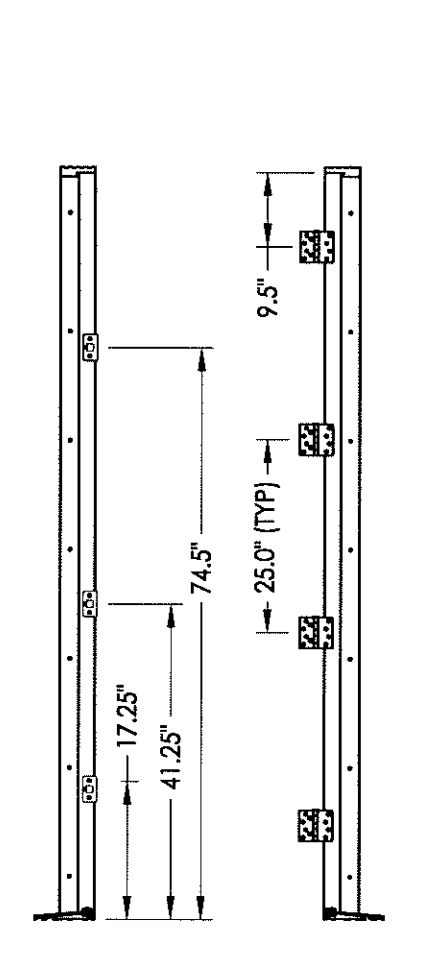
© 2009 R.W. BUILDING CONSULTANTS INC.



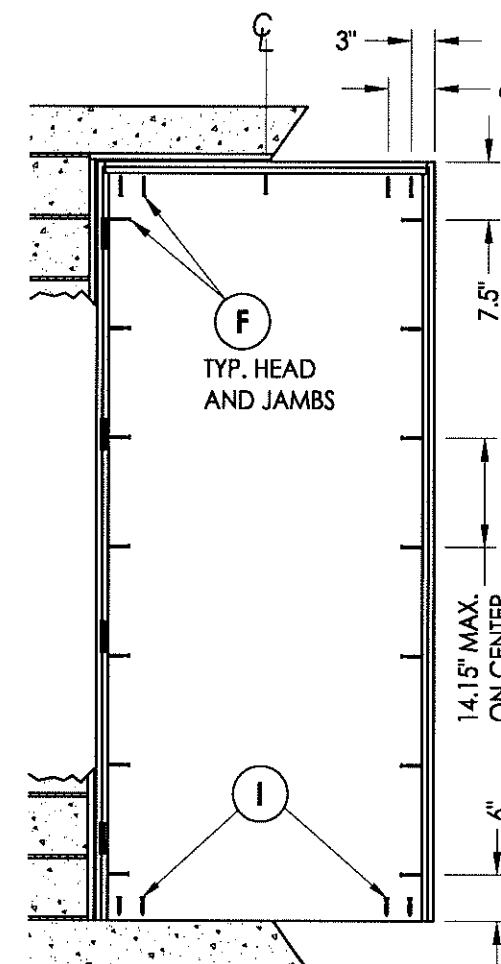
BUCK ANCHORING



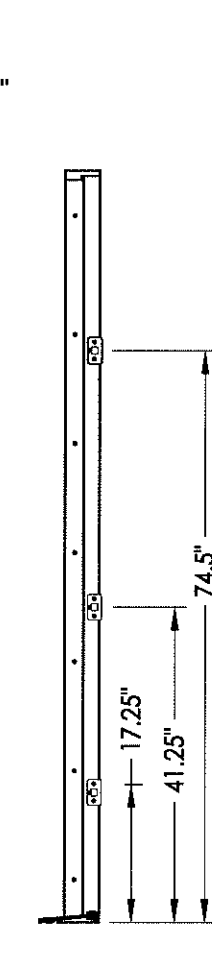
FRAME ANCHORING
Masonry construction
2X buck



HINGE JAMB



FRAME ANCHORING
Masonry construction
1X buck

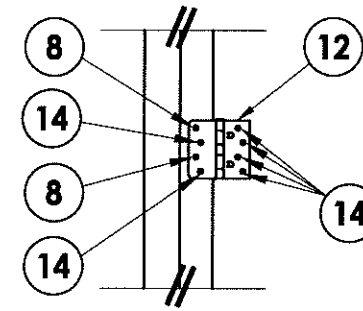


STRIKE JAMB

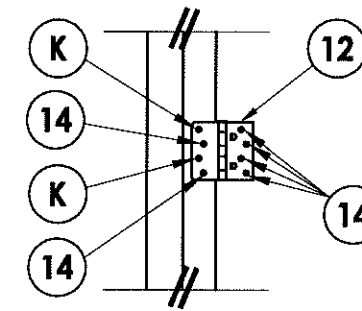
CONCRETE ANCHOR NOTES:

1. Substitution of equal concrete anchors from a different supplier may have different edge distance and center distance requirements.
2. Concrete anchor locations at the corners may be adjusted to maintain the min. edge distance to mortar joints. If concrete anchor locations noted as "MAX. ON CENTER" must be adjusted to maintain the min. edge distance to mortar joints, additional concrete anchors may be required to ensure the "MAX. ON CENTER" dimensions are not exceeded.
3. Concrete anchor table:

ANCHOR TYPE	ANCHOR SIZE	MIN. EMBEDMENT	MIN. CLEARANCE TO MASONRY EDGE	MIN. CLEARANCE TO ADJACENT ANCHOR
ITW	1/4"	1-1/4"	2-1/2"	3"
ELCO	1/4"	1-1/4"	1"	4"
ITW	3/16"	1-1/4"	2-5/8"	2-1/4"



HINGE DETAIL
2X Buck



HINGE DETAIL
1X Buck

Documents Prepared By:

RW BUILDING CONSULTANTS, INC.
P.O. Box 230 Valrico FL 33595
Phone No.: 813.659.9197
Florida Board of Professional Engineers
Certificate of Authorization No. 9813
10.25.12
Lyndon F. Schmidt, P.E. No. 43409

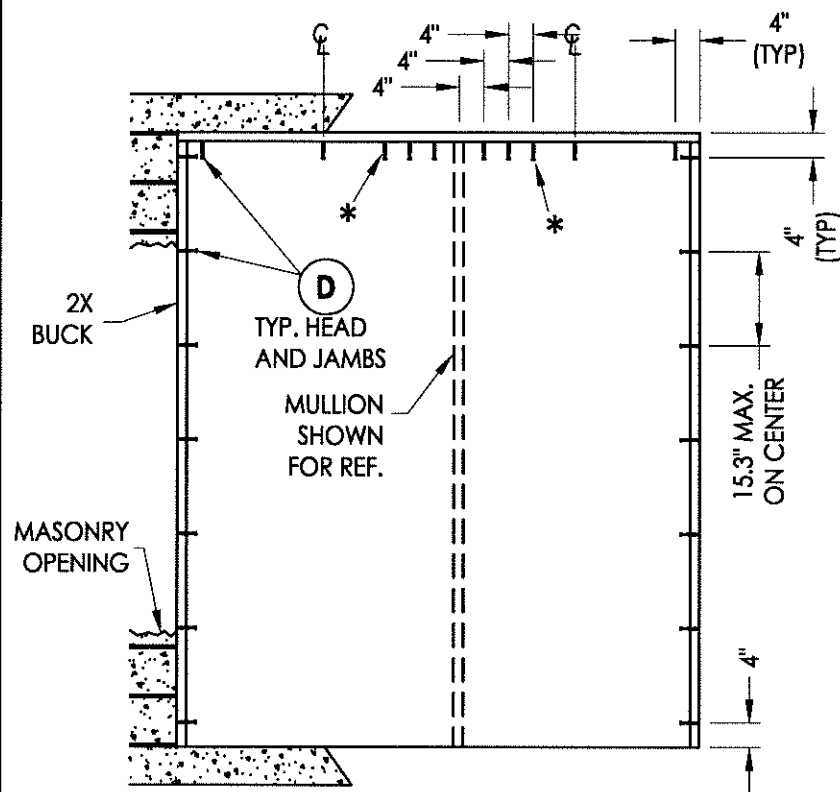
PRODUCT: ROGUE VALLEY DOOR

PART OR ASSEMBLY:
BUCK AND FRAME ANCHORING (X)

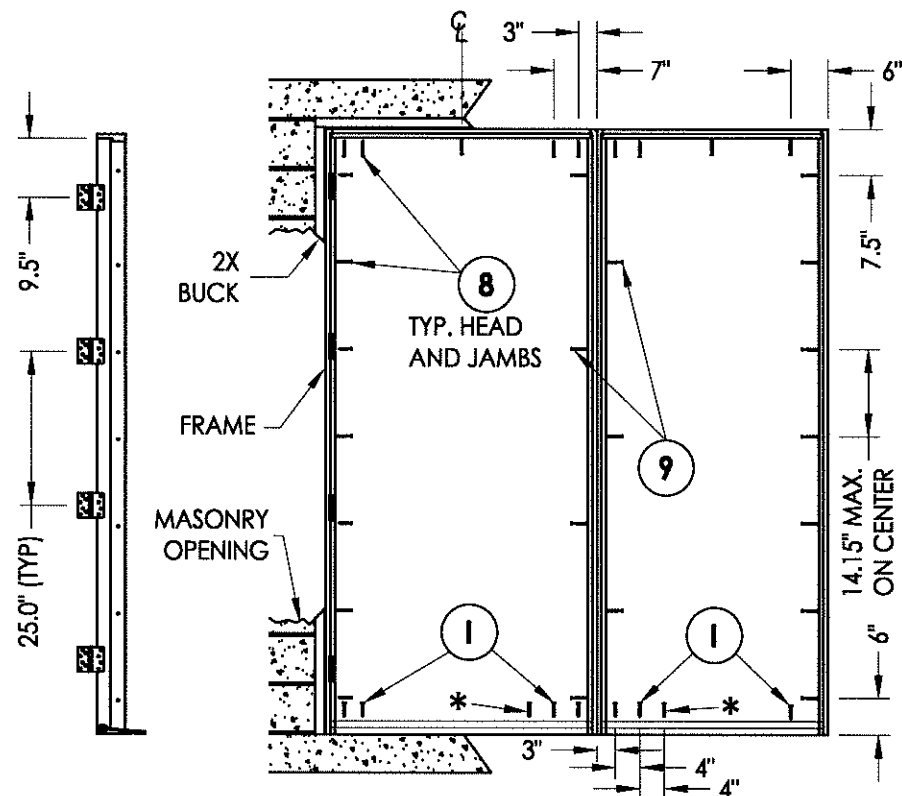
NO.	DATE	BY	REVISIONS
1	10/25/12	LFS	UPDATE TO 2010 FBC

DATE: 10/06/09
SCALE: N.T.S.
DWG. BY: JK
CHK. BY: LFS
DRAWING NO.: FL-13137.1
SHEET 9 OF 14

R:\A - Projects\Project Folders\proj_1401-1500\PF_1482\D. RWBC Drawings\FL-13137\FL-13137.dwg, 10.1

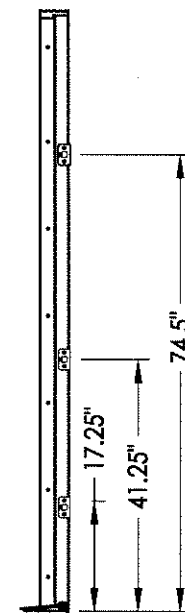


BUCK ANCHORING

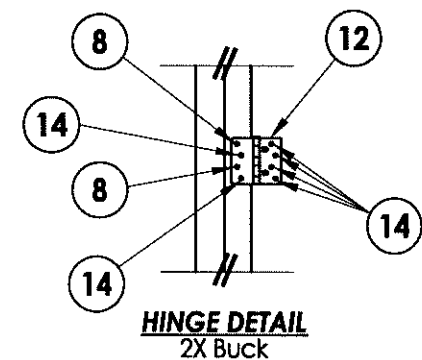


HINGE JAMB

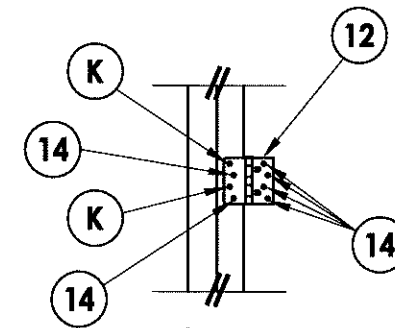
FRAME ANCHORING
Masonry construction
2X buck



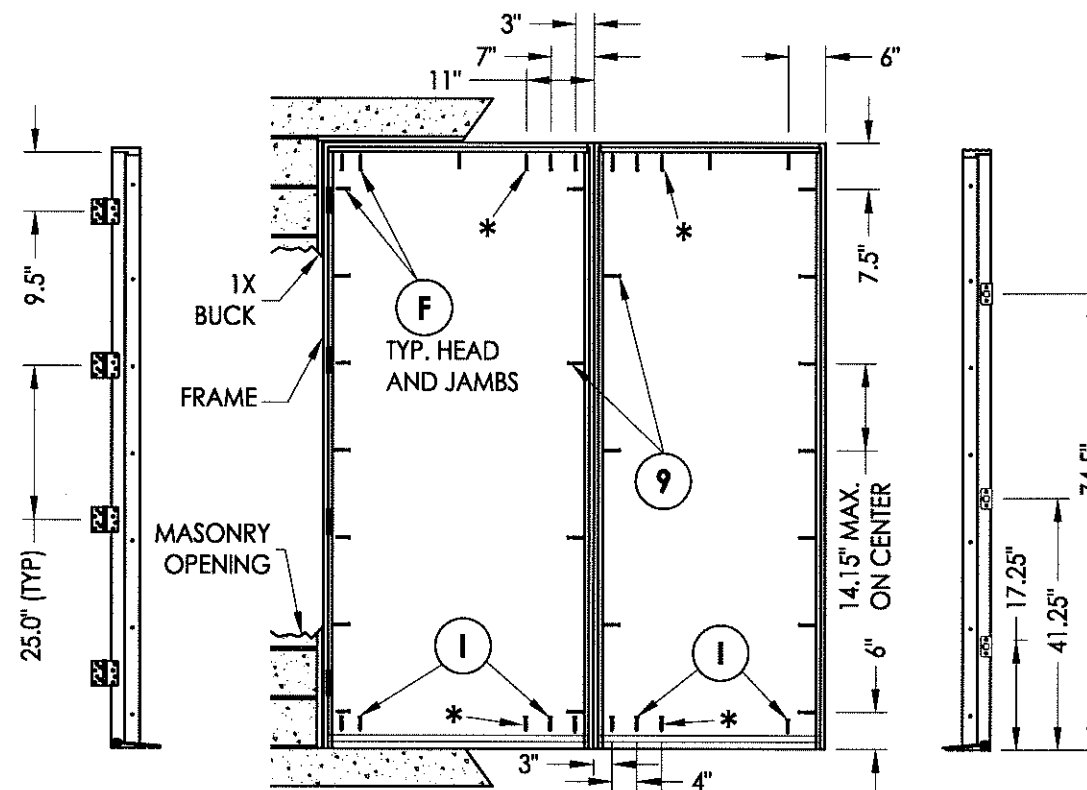
STRIKE JAMB



HINGE DETAIL
2X Buck



HINGE DETAIL
1X Buck



HINGE JAMB

FRAME ANCHORING
Masonry construction
1X buck

STRIKE JAMB

CONCRETE ANCHOR NOTES:

1. Substitution of equal concrete anchors from a different supplier may have different edge distance and center distance requirements.
2. Concrete anchor locations at the corners may be adjusted to maintain the min. edge distance to mortar joints. If concrete anchor locations noted as "MAX. ON CENTER" must be adjusted to maintain the min. edge distance to mortar joints, additional concrete anchors may be required to ensure the "MAX. ON CENTER" dimensions are not exceeded.
3. Concrete anchor table:

ANCHOR TYPE	ANCHOR SIZE	MIN. EMBEDMENT	MIN. CLEARANCE TO MASONRY EDGE	MIN. CLEARANCE TO ADJACENT ANCHOR
ITW	1/4"	1-1/4"	2-1/2"	3"
ELCO	1/4"	1-1/4"	1"	4"
ITW	3/16"	1-1/4"	2-5/8"	2-1/4"

* 4. Outside anchors are required for D.P. > 50 PSF only.

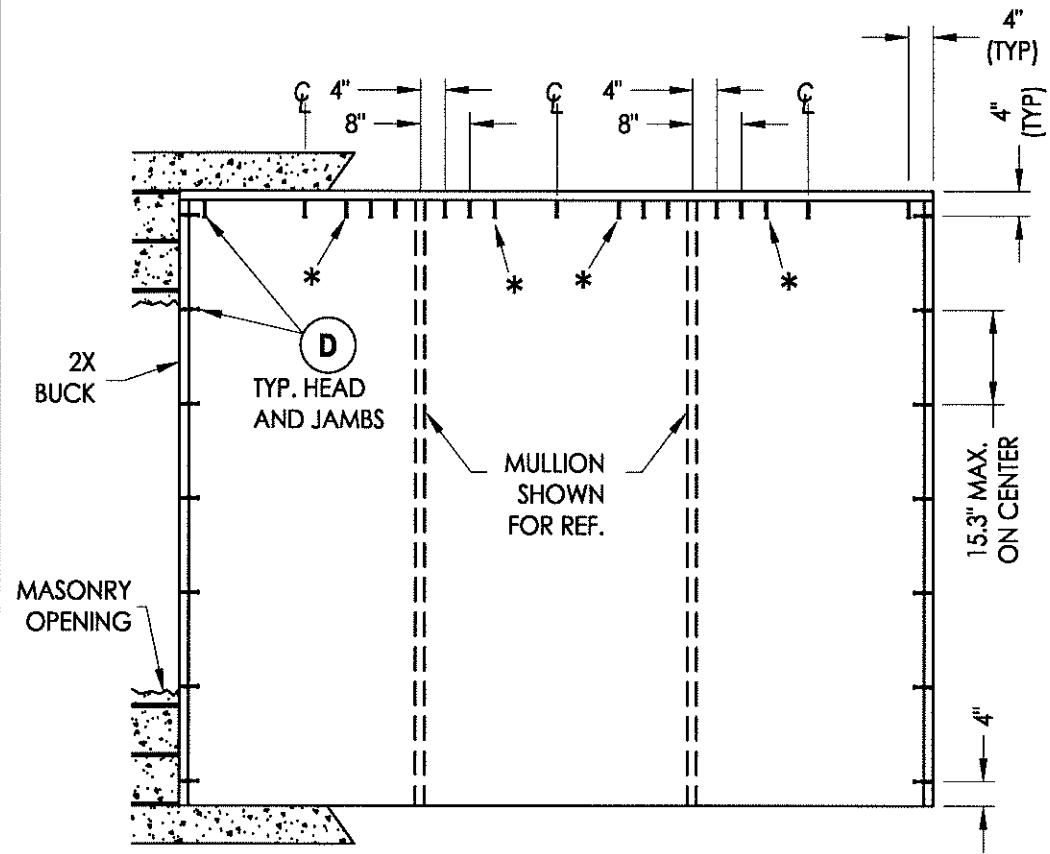
Documents Prepared By:
RW BUILDING CONSULTANTS, INC.
 P.O. Box 230 Valrico FL 33595
 Phone No.: 813.659.9197
 Florida Board of Professional Engineers
 Certificate of Authorization No. 9813
 10.25.12
 Lyndon F. Schmidt, P.E. No. 43409

PRODUCT: ROGUE VALLEY DOOR
 PART OR ASSEMBLY:
 BUCK AND FRAME ANCHORING (XO)

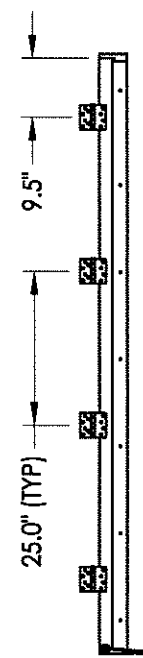
NO.	DATE	BY	REVISIONS
1	10/25/12	LFS	UPDATE TO 2010 FBC

DATE: 10/06/09
 SCALE: N.T.S.
 DWG. BY: JK
 CHK. BY: LFS
 DRAWING NO.: FL-13137.1
 SHEET 10 OF 14

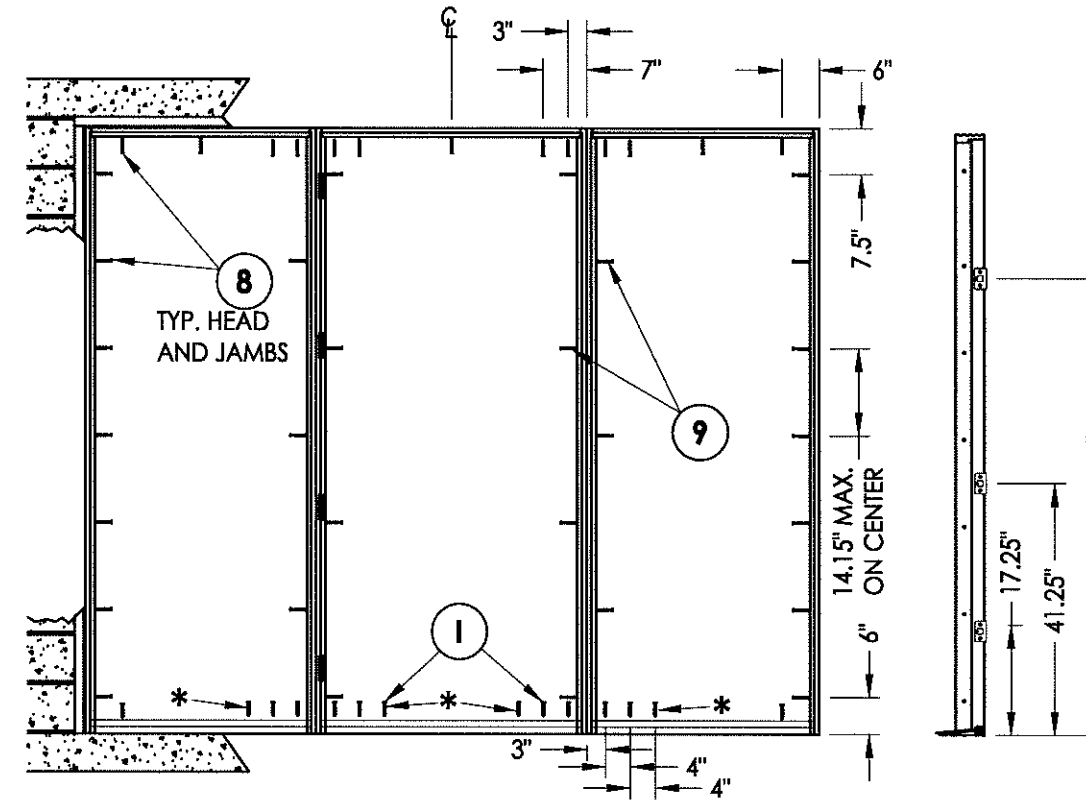
R:\A - Projects\Project Folders\proj_1401-1500\PF_1482\D. RWBC Drawings\FL-13137\FL-13137.dwg, 11.1



BUCK ANCHORING

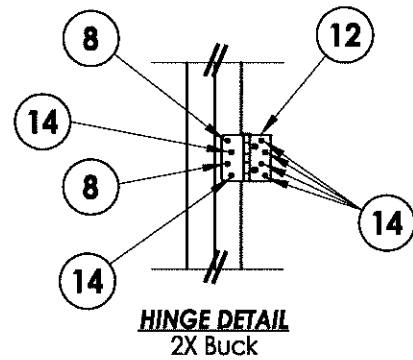


HINGE JAMB

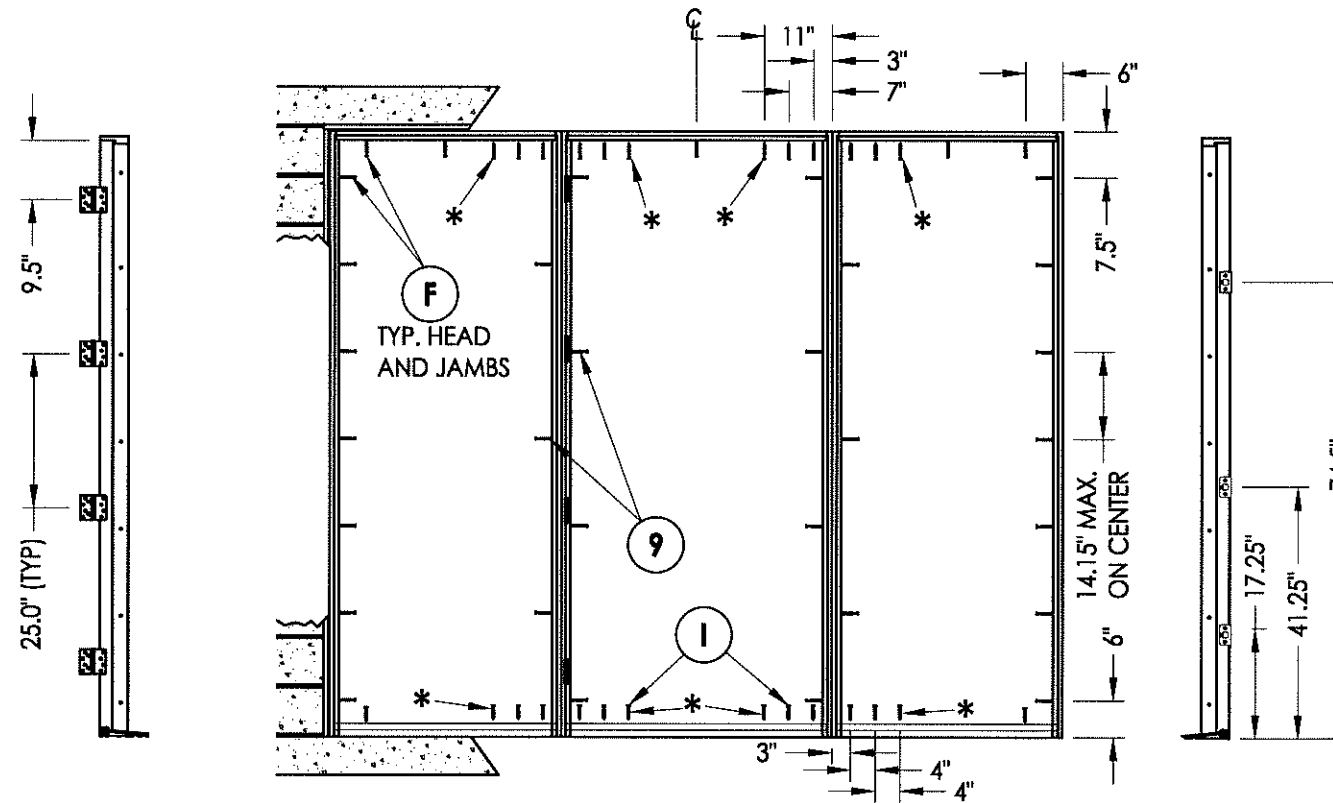


FRAME ANCHORING
Masonry construction
2X buck

STRIKE JAMB



HINGE DETAIL
2X Buck



FRAME ANCHORING
Masonry construction
1X buck

STRIKE JAMB

CONCRETE ANCHOR NOTES:

1. Substitution of equal concrete anchors from a different supplier may have different edge distance and center distance requirements.
2. Concrete anchor locations at the corners may be adjusted to maintain the min. edge distance to mortar joints. If concrete anchor locations noted as "MAX. ON CENTER" must be adjusted to maintain the min. edge distance to mortar joints, additional concrete anchors may be required to ensure the "MAX. ON CENTER" dimensions are not exceeded.
3. Concrete anchor table:

ANCHOR TYPE	ANCHOR SIZE	MIN. EMBEDMENT	MIN. CLEARANCE TO MASONRY EDGE	MIN. CLEARANCE TO ADJACENT ANCHOR
ITW	1/4"	1-1/4"	2-1/2"	3"
ELCO	1/4"	1-1/4"	1"	4"
ITW	3/16"	1-1/4"	2-5/8"	2-1/4"

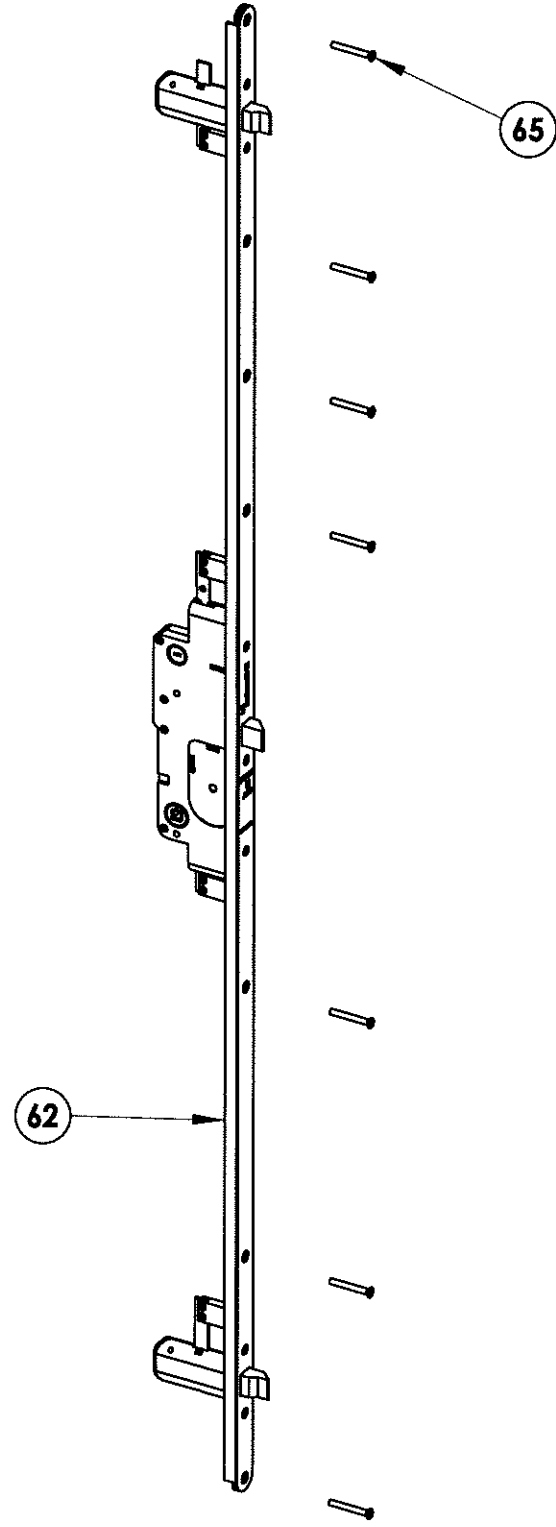
* 4. Outside anchors are required for D.P. > 50 PSF only.

Documents Prepared By:
RW BUILDING CONSULTANTS, INC.
 P.O. Box 230 Valrico FL 33595
 Phone No.: 813.659.9197
 Florida Board of Professional Engineers
 Certificate of Authorization No. 9813
10.25.12
 Lyndon F. Schmidt, P.E. No. 43409

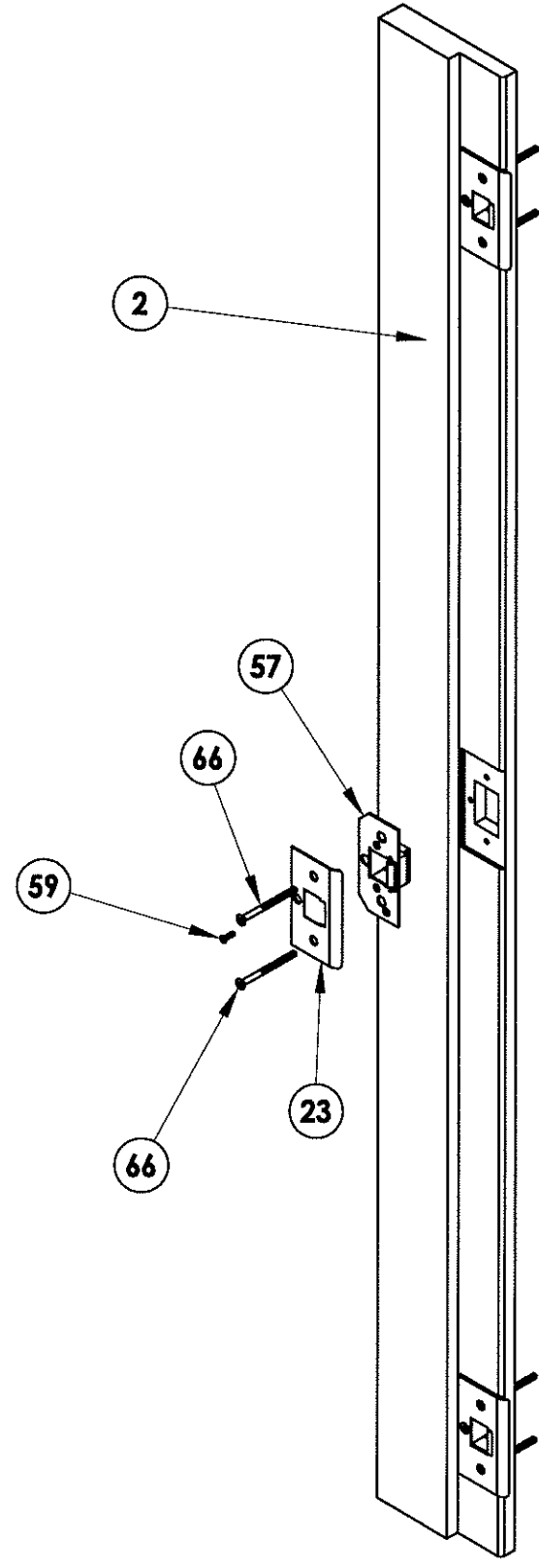
PRODUCT: ROGUE VALLEY DOOR
 PART OR ASSEMBLY:
 BUCK AND FRAME ANCHORING (OXO)

NO.	DATE	REVISIONS
1	10/25/12	UPDATE TO 2010 FBC
		LFS
		BY

DATE: 10/06/09
 SCALE: N.T.S.
 DWG. BY: JK
 CHK. BY: LFS
 DRAWING NO.: FL-13137.1
 SHEET 11 OF 14



3 POINT LOCK DETAIL
W & F Trilennium



STRIKE DETAIL

DATE:	10/06/09
SCALE:	N.T.S.
DWG. BY:	JK
CHK. BY:	LFS
DRAWING NO.:	FL-13137.1
SHEET	12 OF 14

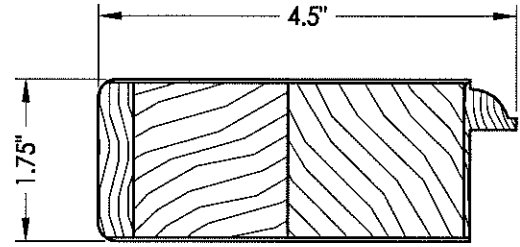
REVISIONS	
NO.	DATE
1	10/25/12
	UPDATE TO 2010_FBC
	LFS
	BY

PRODUCT:	ROGUE VALLEY DOOR
PART OR ASSEMBLY:	LOCK DETAILS

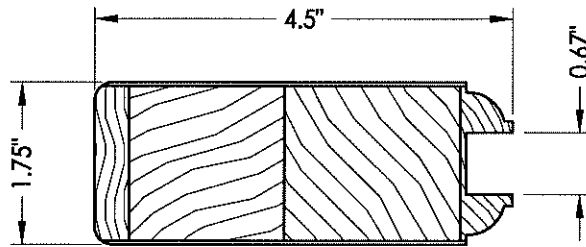
Documents Prepared By:
RW BUILDING CONSULTANTS, INC.
 P.O. Box 230 Valrico FL 33595
 Phone No.: 813.659.9197
 Florida Board of Professional Engineers
 Certificate Of Authorization No. 9813
LFS 10.25.12
 Lyndon F. Schmidt, P.E. No. 43409

R:\A - Projects\Project Folders\proj 1401-1500\PF 1482.D. RWBC Drawings\FL-13137\FL-13137.dwg, 13.1

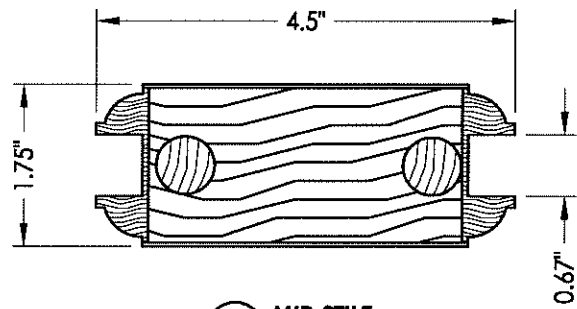
NOTE:
 1. Pins are 5/8" x 5" centered half in the rail, half in the stile.
 2. Door panel wood SG. >= 0.42



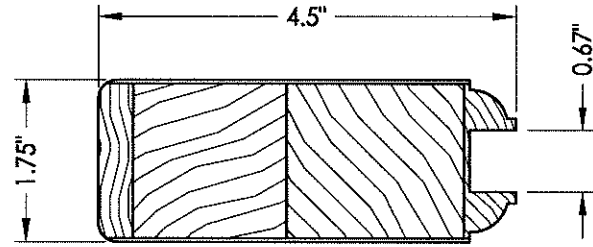
54 HINGE AND LATCH STILE
Glazed



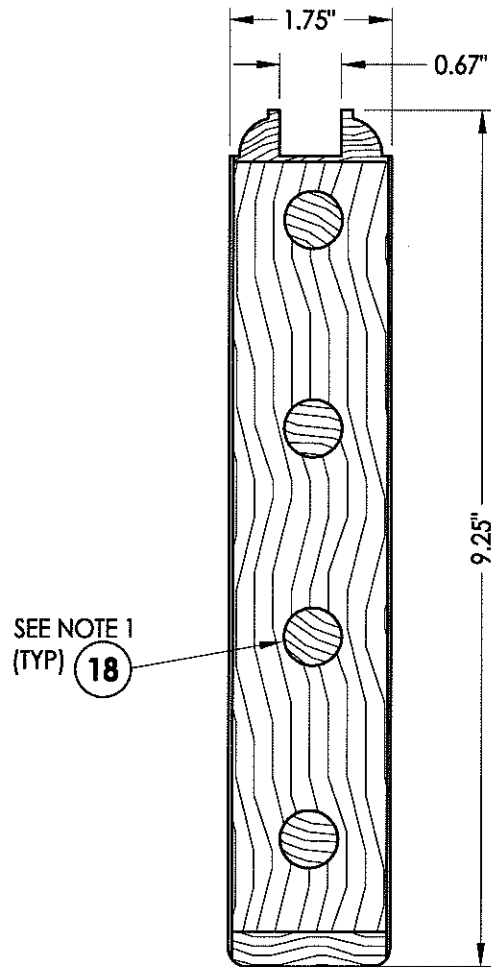
54 HINGE AND LATCH STILE
Panel infill



55 MID STILE

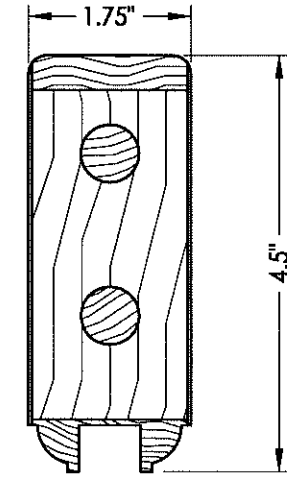


54 HINGE AND LATCH STILE
Panel infill

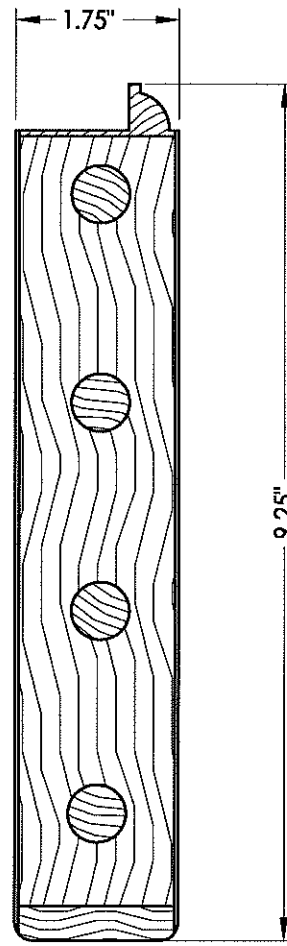


53 BOTTOM RAIL
Panel infill

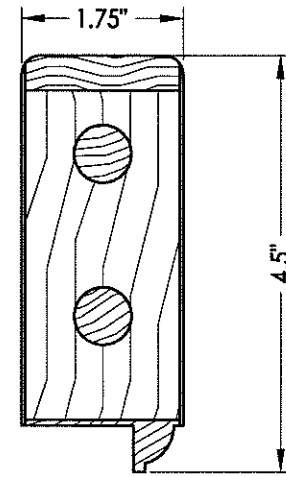
SEE NOTE 1
(TYP) **18**



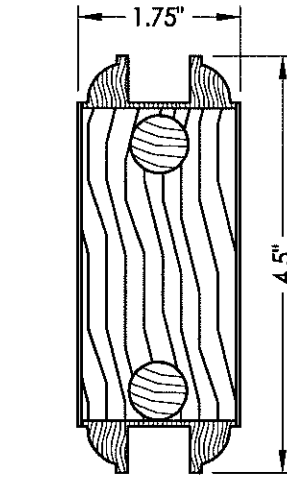
51 TOP RAIL
Panel infill



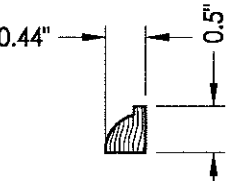
53 BOTTOM RAIL
Glazed



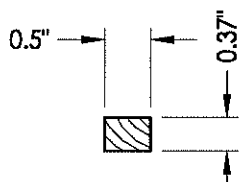
51 TOP RAIL
Glazed



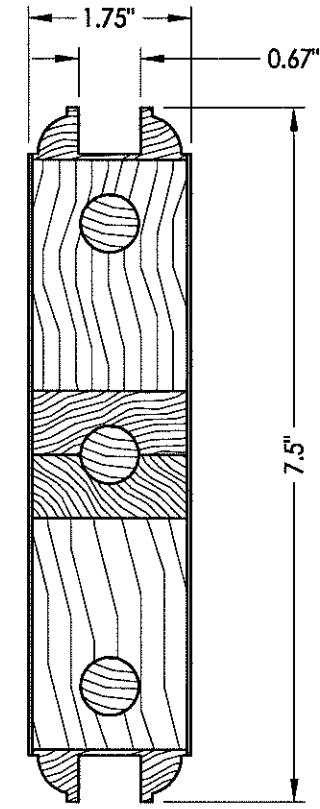
58 MID RAIL
Panel infill



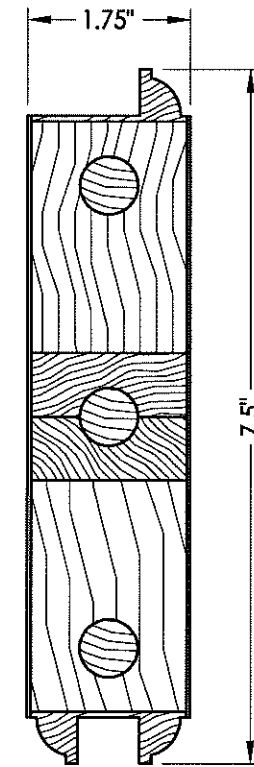
56 GLASS STOP



21 PANEL STOP



52 LOCK RAIL
Panel infill

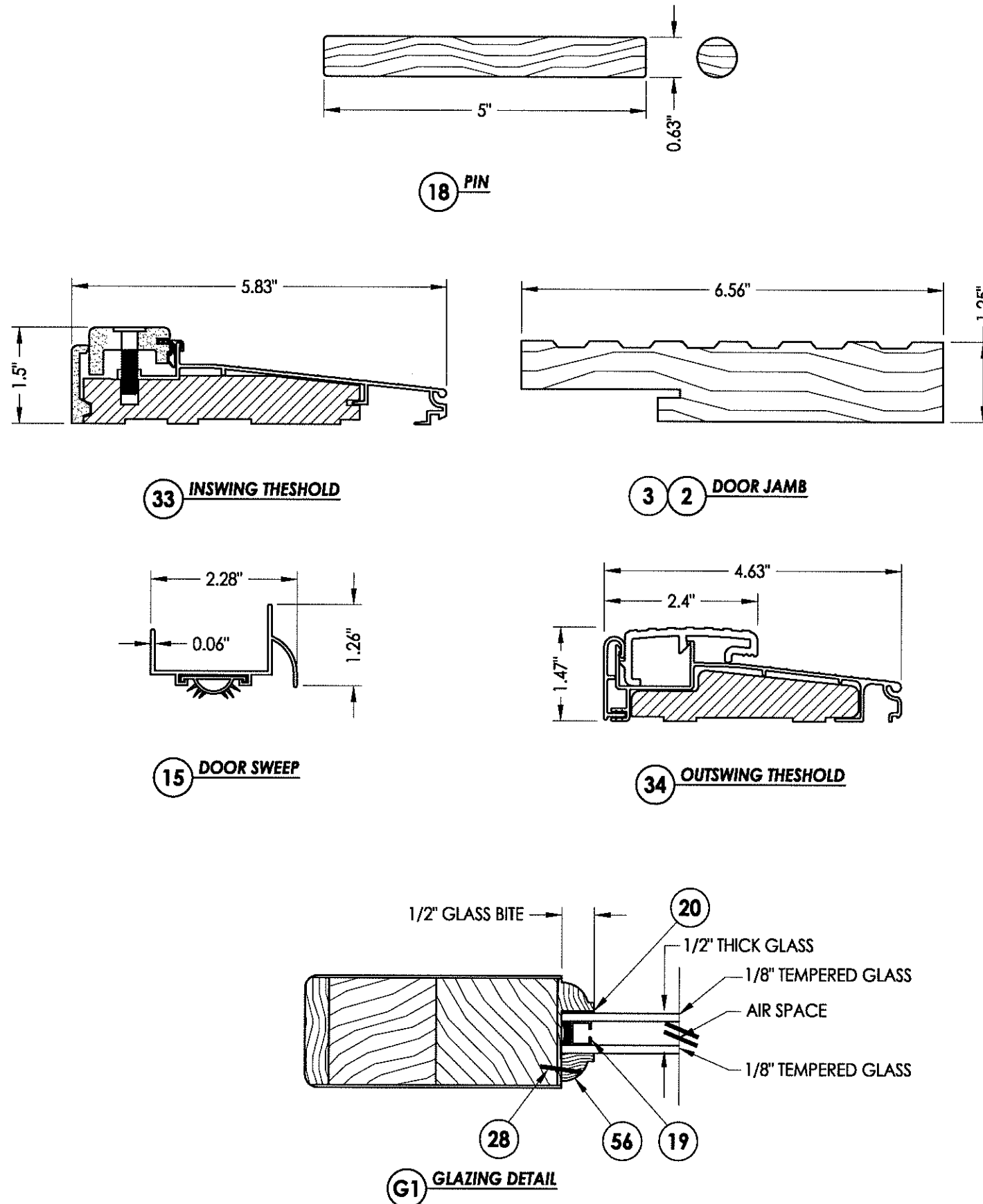


52 LOCK RAIL
Glazed

Documents Prepared By:		RW BUILDING CONSULTANTS, INC. P.O. Box 230 Valrico FL 33595 Phone No.: 813.659.9197 Florida Board of Professional Engineers Certificate Of Authorization No. 9813 17-52 10.25.12 Lyndon F. Schmidt, P.E. No. 43409	
PRODUCT:	ROGUE VALLEY DOOR	COMPONENTS	
PART OR ASSEMBLY:			
NO.	DATE	BY	
1	10/25/12	LFS	
REVISIONS			
DATE: 10/06/09			
SCALE: N.T.S.			
DWG. BY: JK			
CHK. BY: LFS			
DRAWING NO.: FL-13137.1			
SHEET 13 OF 14			

R:\A - Projects\Project Folders\proj_1401-1500\PE 1482\D. RWBC Drawings\FL-13137\FL-13137.dwg, 14.1

BILL OF MATERIALS		
ITEM #	DESCRIPTION	MATERIAL
A	1X BUCK SG >= 0.55	WOOD
B	2X BUCK SG >= 0.55	WOOD
C	1/4" MAX. SHIM SPACE	-
D	1/4" X 2-3/4" ELCO OR ITW CONCRETE SCREW	STEEL
E	MASONRY - 3,192 PSI MIN. CONCRETE CONFORMING TO ACI 301 OR HOLLOW BLOCK CONFORMING TO ASTM C90	CONCRETE
F	1/4" X 3-3/4" ELCO OR ITW CONCRETE SCREW	STEEL
I	1/4" X 2-1/4" ELCO OR ITW CONCRETE SCREW	STEEL
K	3/16" X 3-1/4" ITW CONCRETE SCREW	STEEL
2	DOOR HEADER AND JAMB 1-1/4" X 6 - 9/16" (SG => 0.42 PSF)	WOOD
3	SIDELITE HEADER AND JAMB 1-1/4" X 6 - 9/16" (SG => 0.42 PSF)	WOOD
7	WEATHERSTRIP	FOAM
8	#10 X 2-3/4" PFH WS	STEEL
9	#9 X 2" PFH WS	STEEL
12	HINGE	STEEL
14	1/4" X 3/4" PFH WS	STEEL
15	DOOR SWEEP	ALUM
16	#6 X 1/2" PPH WS	STEEL
17	PANEL INFIL	WOOD/COMP
18	5/8" DIA. X 5" PIN	WOOD
19	.375" GLAZING SPACER	ALUM
20	SEALANT	SILICONE
21	3/8" X 1/2" PANEL STOP	WOOD
22	1" BRAD	STEEL
23	MULTI-POINT STRIKE PLATE	STEEL
28	1/4" X 1" 16GA. STAPLE	STEEL
33	THRESHOLD (INSWING)	-
34	THRESHOLD (OUTSWING)	-
35	INSWING SIDELITE ADAPTER	-
40	SIDELITE PANEL (3/4 LITE)	-
41	SIDELITE PANEL (FULL LITE)	-
49	DOOR PANEL (GLAZED)	-
50	DOOR PANEL (OPAQUE)	-
51	TOP RAIL	WOOD
52	LOCK RAIL	WOOD
53	BOTTOM RAIL	WOOD
54	HINGE AND LATCH STILE	WOOD
55	MID STILE	WOOD
56	GLASS STOP	WOOD
57	BACKING PLATE	STEEL
58	MID RAIL	WOOD
59	#8 X 3/4" PFH MACHINE SCREW	STEEL
62	LOCK ASSEMBLY 3 POINT LOCK (SINGLE DOOR) W&F Trilennium	STEEL
65	#10 X 1-1/2" PFH WOOD SCREW	STEEL
66	#8 X 1-1/4" PFH MACHINE SCREW	STEEL



Documents Prepared By:
RW BUILDING CONSULTANTS, INC.
 P.O. Box 230 Vairico FL 33595
 Phone No.: 813.659.9197
 Florida Board of Professional Engineers
 Certificate Of Authorization No. 9813
LFS 10.25.12
 Lyndon F. Schmidt, P.E. No. 43409

PRODUCT: ROGUE VALLEY DOOR
 PART OR ASSEMBLY: BILL OF MATERIALS, COMPONENTS AND GLAZING DETAIL

NO.	DATE	REVISIONS
1	10/25/12	UPDATE TO 2010 FBC
LFS		BY

DATE: 10/06/09
 SCALE: N.T.S.
 DWG. BY: JK
 CHK. BY: LFS
 DRAWING NO.: FL-13137.1
 SHEET 14 OF 14